

2007 wl i s angari Si

GSE-AR-001-R00

S.p.s. "saqarTvel os saxel mwifo el eqtrosistema"

saqarTvel o, Tbil isi 0105

baraTaSvil is q. #2

Teberval i 2008

<i>dokumentis nomeri:</i> GSE-AR-001-R00	
<i>angariSis saxel wodeba:</i> 2007 wl is angariSi	
<i>angariSis nomeri.:</i> 3	
<i>Sesworebis #.:</i> 0	
<i>warmoadgina:</i> maia ficxel auri	<i>DA</i> <i>TariRiE:</i>
<i>Seamowma:</i> sul xan zumburiZe	<i>DA</i> <i>TariRiE:</i>
<i>daamtkica:</i> sul xan zumburiZe <i>Tanamdeboba:</i> general uri direqtori	<i>DA</i> <i>TariRiE:</i>

Si naarsi

saqarTvel os saxel mwi fo el eqtrosistema		i
1	rezi ume	3
2	finansuri	6
2.1	mimoxil va	6
2.2	ZiriTadi finansuri monacemebi – srul i 2007 wel i - ful adi Semosavl ebisa da danaxarj ebis Semaj amebel i angariSebi	7
3	komerciul i sakiTxebi	8
3.1	momsaxurebis safasuris daricxva da amoReba	8
3.2	xel Sekrul ebebi	8
3.3	aRricxva	9
3.3.1	al fa centri (el eqtroenergiis avtomaturi aRricxvis sistema)	9
3.4	Sesyidvebi	10
3.5	regul irebis sakiTxebi	10
4	teqni kuri sakiTxebi	12
4.1	dispetCerizacia	12
4.1.1	mimoxil va	12
4.1.2	energiis dispetCerizacia da importi	12
4.1.3	sistemis eqspl uataciis monacemebi	13
4.1.4	gegmiuri gamorTvis moTxovnebi	13
4.1.5	gaTiSvebis/SezRudvebis moTxovnebi da kontraqtebis registracia	13
4.1.6	sixSiris kontrol i	14
4.1.7	sasistemo avariebi, sistemis srul i Caqroba, sixSirul i rel eebis moqmedeba	14
4.1.8	avariul i gamorTvebis gamo miuwodebel i energia 220-500kv qsel Si	15
4.1.9	miuwodebel i dadgmul i simZl avris xangrZl ivoba	15
4.1.10	Tboenergobl okebis da `mtkvaris` energobl okis aragegmiuri gaTiSva 2007 wl is Tveebis mixedviT	16
4.2	gadacema	17
4.2.1	Sesaval i	17
4.2.2	wl iuri mimoxil va	17
4.2.3	2008 wl is teq. momsaxurebis saoperacio biuj eti (xel fasebis gareSe)	21
4.2.4	2007 wl is muSaobis ZiriTadi maCvenebl ebi	22
5	donori organizaciebis mier dafinansebul i proeqtebi	23
5.1	el eqtroenergiis bazris mxardamWeri proeqti (EMSP), msopl io bankis kredit i No.3502GE da 3502-1GE	23
5.1.1	msopl io bankis sakredito resursebi da aTvisbul i Tanxebi	23
5.1.2	saqonel i da mowyobil oba	24
5.1.3	sakonsul tacio momsaxureba	28
5.2	EMSP, KfW-s kredit i #.2000 65 334; el eqtroenergiis gadacemis reabil itaciis programa II: 12,783 ml n evro	30
5.3	regional uri qsel is reabil itacia I - KfW-s kredit i #.2003 66 708	31
5.4	el eqtromomaragebis seqtorul i programa – KfW kredit i #.2005 65 53133	
6	administraciul i sakiTxebi	35
6.1	adamianTa resursebi	35
6.1.1	TanamSromel Ta ricxovnebis monacemebi	35
6.1.2	xel fasebi	36
6.1.3	SromiTi urTierTobebi	36
6.1.4	j anmrTel obis dazRvevis sqema	37

6.1.5	usafriTxeoba	37
6.1.6	momzadeba da ganviTareba	37
6.1.7	korporatiul i sakiTxebi	37
6.2	lojistika	38
7	iuridiul i sakiTxebi	39
8	sazogadoebasTan urTierToba	40
9	danarTi A: 2007 wl is ful adi saxsrebis Semosaval -gasavl is Semaj amebel i angariSi (Seumowmebel i)	41
10	danarTi B: avariul i gamorTvebisa da mowyobil obebis/xazebis dazianebis amsaxvel i diagramebi	42
11	danarTi C: sse-s struqtura	44

1 reziime

2006-2007 wl ebis ganmavl obaSi bazris yvel a monawil esTan efeqtiani pirdapiri kontraqtebis gaformebas Sedegad mohyva kompaniis finansuri mdgomareobis mniSvnel ovani gaumj obeseba. saerTo wl iuri Semosavl is saSual o maCvenebl ma 2007 wel s daricxul i Tanxis 114% Seadgina, rac sagraZnobl ad aRemateba wina wl is Sesabamis maCvenebl s (51%).

mniSvnel ovnad gaizarda da stabiluri gaxda 2007 wl is ganmavl obaSi kvalificiuri sawarmoebis mier moxmarebuli el eqtroenergiis dispetCerizaciisa da gadacemis momsaxurebis safasuris gadaxda. 2007 wl is ganmavl obaSi gaweul momsaxurebaze daricxul i Tanxebis amoRebis saSual o wl iurma maCvenebl ma sadistribucio kompaniebidan 95%, xolo pirdapiri momxmarebl ebidan 99% Seadgina. sul kvalificiuri sawarmoebis mier momsaxurebis safasuris gadaxdis saSual o wl iuri maCvenebl i 95%-ia.

2007 wl is ganmavl obaSi sse-s sawesdebo kapital Si ganxorciel da cvl il ebebi, roml is Sedegad amoRebul iqna sse-s bal ansze myofi 110kv el eqtrogadacemi xazebi da Sesabamisad, sawesdebo kapital i Semcirca daaxl oebiT 4,1 milioni l ariT. Tumca, 2007 wl is 28 noembridan sse-s kapital i kvlav gaizarda daaxl oebiT 8,3 milioni l ariT da mis bal ansze iricxeba afxazetis a/r-isterritoriaze arsebuli maRali Zabvis el eqtrogadacemi xazebi da qvesadgurebi.

2007 wel s Catarada ori saerTaSoriso tenderi KfW-s mier dafinansebuli msxvili proeqtebis ("regionaluri gadacemis qselis reabilitacia l" da "el eqtromomargebis seqtoruli programa") Semsrul ebeli mTavari kontraqtorebis SesarCevad. 2007 wl is 7 agvistos warmodgenili satendero winadadebebis Sefasebis Sedegad orive tenderSi gamarjvebul kompaniad dasaxel da avstriuli kompania "Siemens AG Osterreich". sakontraqto SeTanxmebebs xeli moewera 2007 wl is 21 noembers. aRniSnuli proeqtebis farglebSi sistemaSi ganxorciel deba daaxl oebiT 18 milioni evros investicia, rac kidev ufro aamaRl ebs sse-s gadacemis sistemis imedianobis maCvenebl ebs. dagegmilia proeqtebis dasrul eba 2009 wl is pirvel naxevarSi.

aqtiurad mimdinareobs sse-s erT-erTi mniSvnel ovani proeqti «SCADA da tel ekomunikacia», romelic msofiio bankis mier dafinansebuli «el eqtroenergiis bazris mxardamWeri proeqti»-s ZiriTadi komponentia da misi saerTo Rirebul eba daaxl oebiT 12 milion evros Seadgens. proeqtis dasrul ebis gansazRvruli TariRia 2008 wl is dekemberi. Tumca, kontraqtorma wl is bol os SemogvTavaza mTel i rigi cvl il ebebi drois grafikSi, rac ZiriTadad zogierTi komponentis Sesrul ebis gadavadebas gul isxmobs. igegmeba Sesabamisi RonisZiebebi, raTa Tavidan avicil oT proeqtis Sesrul ebis grafikidan CamorCena da Sesabamisad proeqtis dasrul ebis TariRis gadaweva.

gegmi mixedvit mimdinareobda, aseve, msofiio bankis mier dafinansebuli amomrTvel ebisa da denis trasformatorebis mowodeba-montaJis proeqtebi. 220/110kv mowyobil obebis didi nawili ukve damontaJebulia sxvadasxva qvesadgurSi da gasvebulia eqspl uataciaSi. xolo, qvesadgurSi «qsani» 500/220kv amomrTvel ebis mowodeba-montaJis proeqtis farglebSi, samontaJo samuSaoebis dawyeba dagegmilia 2008 wl is ianvarSi. orive proeqti dasrul deba 2008 wl is pirvel naxevarSi.

2006 wl is msgavsad, 2007 wl is ganmavl obaSi adgil i ar hqonia sistemis srul Caqrobis (aRsaniSnavia, rom 2004 wel s moxda srul i Caqrobis 5 SemTxveva, xol o 2005 wel s 2 SemTxveva). mniSvnel ovnad Semcirda nawil obrivi Caqrobis SemTxvevaTa raodenobac. sul adgil i hqonda 3 SemTxvevas (2006 wel s nawil obrivi Caqrobis SemTxvevaTa raodenoba 11-s Seadgenda). vimedovnebT, rom 2008 wel s kidev ufro SevamcirebT aRniSnul maCvenebel s.

2007 wl is ganmavl obaSi saqarTvel os energosistema paral el ur reJimSi muSaobda rogorc ruseTis, aseve azerbaijanis energosistemastan. maisidan agvistos CaTvl iT ganxorciel da el eqtroenergiis eqsporti TurqetSi, ivl isi-agvistos TveebSi – ruseTsi. aRsaniSnavia, rom 2007 wel s ganxorciel ebul i el eqtroenergiis eqsporti 31%-iT aRemateba importis saerto mocul obas.

2007 wl is 31 dekembris mdgomareobiT, sse-Si dasaqnebul Ta raodenoba sul 1,048-s Seadgenda. wl is ganmavl obaSi disciplinarul i RonisZieebis safuzvel ze ganTavisufli da rva TanamSromeli.

2007 wl is sxva mniSvnel ovani sakiTxebi:

- 2007 wl is finansuri reabilitaciis gegmis gadaWarbebiT Sesrul eba;
- sse-s mier yvel a sasexo da mimdinare val debul ebis Sesrul eba da mimdinare gadasaxadebis gadaxda.
- mniSvnel ovani struqturuli cvl il ebebi kadrebis optimizaciis mizniT;
- intensiuri sainvesticio programis SemuSaveba 2008 wl isaTvis;
- sistemis saimedobis zrda, rac garkveul wil ad ganpirobebul ia intensiuri kapital dabandebisa da sareabilitacio programebis ganxorciel ebiT;

2007 wl is 3 dekembers dasrul da saqarTvel os el eqtroenergiis gadacemis sistemis da dispetCerizaciis martvis 5-wl iani xel Sekrul eba. kompaniis martva gadaeca qarTul mxares. sse-s xel mZRvanel oba madl obas uxdis ESBI Georgia-s kompaniis ganvitarabasa da winsvl aSi Setanili wvl il isaTvis.

kompaniis axali xel mZRvanel oba ganagrZobs aucil ebel i RonisZieebis gatarebas, roml ebic sse-s gansazRvrul i misiis misaRwevad, Camoyal ibebul i xedvisa da faseul obebis gaTval iswinebiT, rac gul isxmobs:

- **misia**: gadacemisa da dispetCerizaciis efekturi da uwyveti momsaxurebis uzrunvel yofa momxmarebl is moTxovnis Sesabamisad.
- **kompaniis xedva**: sse momaval Si Camoyal ibeba msolfio standartebis Sesafetisi da momgebiani gadacemisa da dispetCerizaciis kompaniad; mudmivad Seiswavl is siaxleebis da iqneba maTi atvisebis procesSi; daakmayofil ebs momxmarebl is moTxovnebs da sazogadoebisaTvis sasurvel samuSao adgil ad iqceva.
- **kompaniis faseul obebi**: patiosneba; erTgul eba; erTianoba; gamWvirval oba; pativiscema; momxmarebel ze orientireba; profesional izmi; disciplina; gunduri muSaoba; adaptacia/pro-aqtiuroba.

- **sse-s strategiul i amocanebi:**

- sse-s finansurad myar da damouki debel kompaniad Camoyal ibebis mizniT saxsrebi moZieba da maTi efeqtiani marTva;
- sse-Tvis kval ificirebul i TanamSroml ebis moZidva/daqiraveba, maTi Sesaferebis Tanamdebobebze dasaqmeba da SenarCuneba, daCqarebul i trainingebisaTvis meTodebisa da procedurebis SemuSaveba da ganxorciel eba;
- sse-is gadamcemi qsel is grZel vadiani muSaobisa da mdgradobis SenarCunebis mizniT aqtivebis efeqtiani marTva;
- saimedo tel ekomunikaciis saSual ebebisa da SCADA tipis sistemebis meSveobiT saqarTvel os el eqtrosistemis efeqtiani marTva;
- sse-s produqtiul obis gazrdis mizniT uaxl esi teqnika da mowyobil obebis SeZena, montaJi da saTanado marTva;
- el eqtroenergiis gadacemisa da dispetCerizaci asTan dakavSirebul saerTaSoriso momsaxurebaSi sse-is roli ganviTareba;
- sse-is poziciis ganmtkiceba dinamiur pol itikur da social ur-ekonomikur garemoSi;
- sse-is produqtiul obis amaRl ebis mizniT ufl ebamosil ebebis saTanado del egireba.

2 finansuri

2.1 mimoxil va

rogorc cnobil ia, sse imyofeba reabil itaciis reJimSi. sse-is reabil itaciis gegma moicavs TxuTmetwl ian sareabil itacio periods, roml is dasasrul s kompaniis finansuri mdgomareoba mkveTrad gaumj obesdeba, kompania gaxdeba gadaxdisunariani sawarmo, daifareba yvel a daval ianeba da sse SeZl ebs warmarTos da ganaviTaros Tavis saqmianoba mzardi ekonomikis fargl ebSi. am mimarTul ebiT mniSvnel ovani progresi SeimCneoda 2007 wl is ganmavl obaSi. kerZod, sse-is faqtobrivi ful adi Semosaval i Seadgens daricxul i Semosavl is 114%-s, nawil obriv Zveli daval ianebebis amoRebis gamo, rac sagrZnobl ad aRemateba reabil itaciis gegmiT gaTval iswinebul Sesabamis maCvenebl s (60%). Tumca, unda aRiniSnos, rom sse-is Semicirebul i tarifis gamo, faqtobrivi ful adi nakadi, el eqtroenergiis igive mocul obaze, reabil itaciis gegmiT gaTval iswinebul maCvenebl ebze nakl ebia, ris gamoc SesaZl oa saWiro gaxdes gegmaSi cvl il ebebis Setana an tarifis gazrdaze ganacxadis wardgena.

2007 wel s sse-m srul ad gaistumra operirebiT da grZel vadiani sasesxo xel Sekrul ebebiT nakisri val debul ebebi. aseve, gaumj obesa daricxul i Semosavl ebis amoRebis maCvenebl i.

sse-s saerTo Semosavl ebma 56,3 ml n l ari Seadgina, xol o danaxarj ebma - 58,3 ml n l ari, maT Soris kapital urma danaxarj ebma Seadgina 15,5 ml n l ari (detal uri informacia ix. A danarTSi).

aqtiur fazaSi Sevida donori organizaciebis dafinansebul i proeqtebi, rac ganapirobebs sakredito resursebidan Taxebis intensiur aTvisebas.

2007 wel s kompaniam daiwyo msopl io bankisa da KfW bankis winaSe grZel vadiani sasesxo xel Sekrul ebebiT nakisri val debul ebebis gastumreba - sesxebis ZiriTadi Tanxebis dafarva. kerZod, 2007 wl is ganmavl obaSi sesxebis momsaxurebisaTvis daixarj a sul 4,6 ml n l ari.

sse-m 2007 wel s aWaris energokompaniidan miRo saellvo val ad aRiarebul i Tanxa 11 ml n l aris odenobiT. aRniSnul i TanxiT gastumrebeul i iqna sse-s saxel mwifo biuj etis winaSe arsebul i sol iduri daval ianeba. garda amisa, 2007 wl is ganmavl obaSi sse-m gadaxada yvel a mimdinare gadasaxadi, maT Soris mogebis gadasaxadi - 2,3 ml n l ari.

2007 wl is bol os kompaniis marTva gadaeca qarTul mxares, romel ic aqtiurad gegmavs kompaniis reabil itaciis procesis gagrZel ebas, maT Soris efeqtiani finansuri menej mentis gziT.

informacia sse-s faqtobrivi wl iuri finansuri Sedegebis Sesaxeb ixil eT qvemoT moyvani l cxril ebSi.

2.2 ZiriTadi finansuri monacemebi - sruli 2007 weli - fuladi
Semosavl ebisa da danaxarjebis Semajamebeli angariSebi

Tve	gadacemisa da dispetcerizaciis momsaxurebis gayidvebis angariSebi	momdevno Tvis Semosavl ebi			Semosavl ebis procentuli maCvenebel gayidvebiTan mi marTebaSi
		pirdapiri kontraqtebi da esko	Zveli pirdapiri kontraqtebi da sxva	sul	
	lari'000	lari'000	lari'000	lari'000	
dekemberi-06	4,738	3,631	8	3,639	77%
ianvari-07	4,631	3,760	14	3,774	81%
Teberv-07	4,075	3,783	9	3,792	93%
marti-07	4,425	4,187	62	4,249	96%
april i-07	4,309	4,129	12	4,141	96%
maisi-07	4,108	2,797	0	2,797	68%
ivnisi-07	3,651	2,294	12,270	14,563	399%
ivlisi-07	3,419	2,701	135	2,836	83%
agvisto-07	3,278	2,555	182	2,737	84%
seqtemb-07	5,249	1,978	14	1,992	38%
oqtomb-07	3,506	8,820	54	8,874	253%
noemberi-07	3,933	2,782	180	2,962	75%
wl is Sedegi	49,321	43,418	12,940	56,358	114%
cxrili 1					

Tve	danaxarj ebi			
	personalze gadaxdili xel fasebi gadasaxadebisa da Zveli saxel faso davaliane bis CaTvl iT	gadasaxadebi	grZel vadiani kreditebis momsaxureba	administraciuli, mimdinare da kapitaluri danaxarj ebi
	lari'000	lari'000	lari'000	lari'000
ianvari-07	743	83	6	1,063
Teberv-07	846			1001
marti-07	951	1134	609	480
april i-07	1,246	25		357
maisi-07	910	784	1,296	290
ivnisi-07	907	445	209	823
ivlisi-07	12,245	759	-142	905
agvisto-07	925		171	1,451
seqtemb-07	3,527	759	2,538	2,261
oqtomb-07	977		50	1,252
noemberi-07	942	210	1,417	2,151
dekemberi-07	946	759	455	9,553
wl is Sedegi	25,165	4,958	6,559	21,640
cxrili 2				

aseve ixileT AdanarTi: 2007 wl is fuladi saxsrebi Semosaval-gasvlis Semajamebeli angariSi (Seumowmebeli)

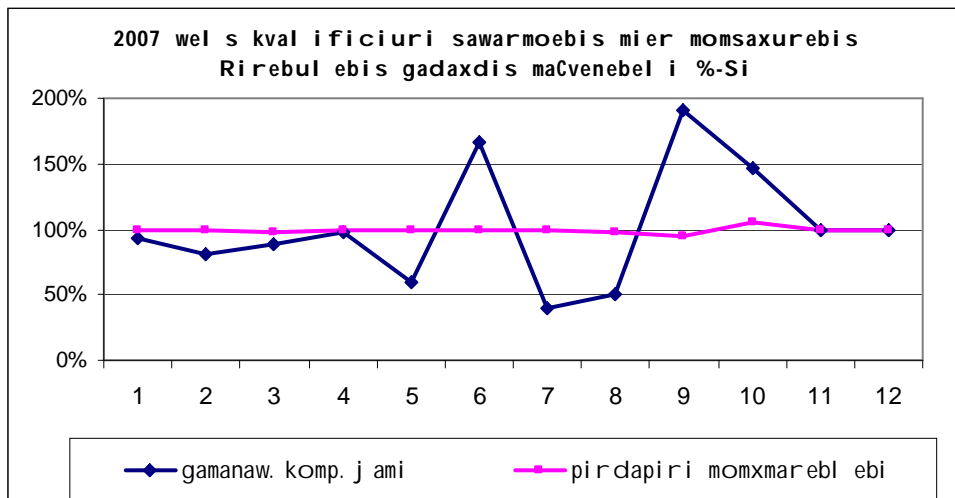
3 komerciul i sakiTxebi

3.1 momsaxurebis safasuris daricxva da amoReba

2007 wel s kval ificiur sawarmoebis mier moxmarebul i el eqtroenergiis dispetCerizaciisa da gadacemis momsaxurebis safasuris gadaxda wina wl ebTan SedarebiT sagrZnobl ad gaizarda da stabil uri gaxda, rasac xel i Seuwo el energiis yidva-gayidvis axal sabazro wesebze gadasvl am da pirdapiri xel Sekrul ebebis gaformebam. wl is ganmavl obaSi gaweul i momsaxurebis safasuris amoRebis saSual o wl iurma maCvenebl ma gamanawil ebel i kompaniebdan 95%, xol o pirdapiri momxmarebl ebdan 99% Seadgina. sul 2007 wl is ganmavl obaSi kval ificiur sawarmoebze daricxul i Tanxebis amoRebis saSual o maCvenebl ia 95%.

dasaxel eba/periodi	1	2	3	4	5	6	7	8	9	10	11	12	2007w.
1 gamanaw. komp. j ami	93%	81%	89%	97%	59%	167%	40%	50%	191%	147%	100%	100%	95%
2 pirdapiri momxmarebl ebi	100%	100%	97%	99%	99%	99%	99%	98%	94%	106%	100%	100%	99%
3 sul	94%	86%	90%	97%	67%	131%	50%	58%	180%	131%	100%	100%	95%

cxril i 3



aqtiurad mimdinareobda muSaoba, raTa "bazris wesebSi" ar Sesul iyo cvl il ebebi, romel Ta Sedegad Semcirdeboda sse-s Semosavl ebi. am mimarTul ebiT muSaoba momaval Sic gagrZel deba.

3.2 xel Sekrul ebebi

bazris axal i wesebis Sesabamisad Seiqmna pirdapiri kontraqtebis reestri da mimdinareobs misi sistematuri ganaxl eba.

2007 wl is agvistodan dekembris CaTvl iT gaformda 35 axal i pirdapiri xel Sekrul eba da damatebiTi SeTanxmeba kval ificiur sawarmoebTan sse-saTvis gaumj obesebul i da zaral isagan damcavi pirobebiT; miRweul i Sedegebi asaxul ia daricxvis da gadaxdis angariSebSi.

2007 wel s gaformda 16 xel Sekrul eba da damatebiTi SeTanxmeba gadadinebze (importze, eqsportze, tranzitze, paral el ur muSaobaze). moqmedi

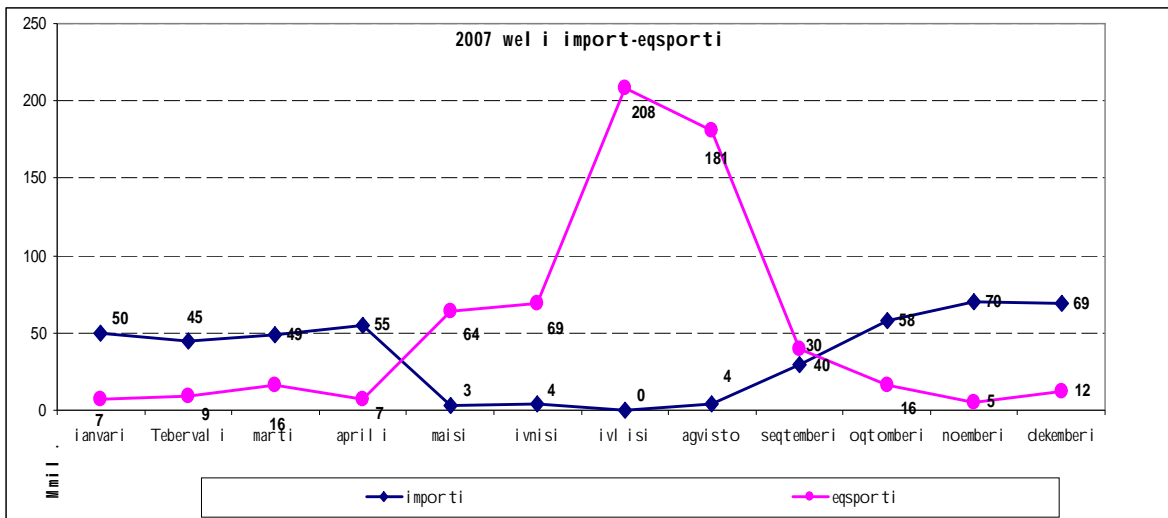
xel Sekrul ebebidan aRsaniSnavia xel Sekrul ebebi el eqtroenergiis gacvl aze ruseTTan, azerbaijanTan da TurqetTan, aseve xel Sekrul ebebi el eqtroenergiis urTierTmiwodebaze ruseTTan avariul i situaciebis dros.

garda amisa, 2007 wl is 27 dekembers gaformda SeTanxmeba sse-sa da OAO "ФСК ЕЭС"-s Soris 500kv e.g.x. „kavkasionis“ miwodebis wertil Si mxareTa mier gacemul i da miRebul i el energiis faqtiuri mocul obis gaangariSebis“ meTodikaze.

aRsaniSnavia, rom 2007 wel s ganxorciel ebul i eqsporti 31%-iT aRemateba imports. qvemoT cxril Si mocemul ia monacemebi 2007 wel s ganxorciel ebul i mezobel i qveynebis energosistemebis mimarTul ebebiT el eqtroenergiis importisa da eqsportis Sesaxeb:

	1	2	3	4	5	6	7	8	9	10	11	12	sul
importi	49,580	44,547	48,502	55,236	3,218	3,997	0	3,631	29,770	58,229	69,910	68,969	435,595
eqsporti	6,699	9,135	16,296	7,053	64,332	68,711	208,350	180,541	40,111	15,929	4,590	12,207	633,960
cxrili 4													

(ml n.kvt.sT)



3.3 aRricxva

aRricxvianobis mowesrigebis da zusti aRricxvis mizniT moxda saangariSsworebo, sabal anso da sakontrol o mricxvel ebis da aRricxvis kvanZebis inspeqtirebia. 2007 wl is eqspl uataciaSi miRebul i da Semowmebul i iqna 148 aRricxvis wertil i da mricxvel i.

3.3.1 al fa centri (el eqtroenergiis avtomaturi aRricxvis sistema)

aRricxvis sistemis mowesrigebis mizniT, msopl io bankis mier dafinasebul i proeqtis fargl ebSi Seiqmna da muSaobs el eqtoenergiis aRricxvis kontrol is avtomatizirebul i sistema (eaka sistema-), romelic 30 wuTiani interval iT awarmoebs aRricxvis wertil ebSi arsebul i mricxvel ebidan komerciul i monacemebis da qsel is parametrebis gamokitxvas da maT safuZvel ze miRebul i

gaangariSebebi SegviZl ia vixil oT cxril ebis, grafikebis da diagramebis saxiT.

Seqmnil ia el eqtroenergiis aRricxvis wertil ebis monacemTa baza, romel ic moicavs sse-s bal ansze arsebul i Tvrameti qvesadguris 500 minaerTs.

agreTve Seiqmna saangariSo jgufebi qvesadgurebisa da qvesadgurebis Zabvis klasis mixedvit (220, 110, 35 da 10-6kv), aseve e.g.x.-sa da transformatorebisaTvis, roml ebic iZl eva ubal ansobis da misi gamomwvevi mizezis operatiul ad dadgenis saSual ebas.

damyarda EinternetkavSiri "EnergoPro Georgia"-s `al facentri--s serverTan, aRiwera maT bal ansze arsebul i mricxvel ebis parametrebi sse-s monacemTa bazaSi da Sesazl ebel ia informaciis urTierTgacvla.

sse-s bal ansze arsebul 18 qvesadgurSi A3 tipis mricxvel ebSi CaitvirTa axal i programa, Semowmda RS485 interfeisebi da yvel a mierTebul ia RTU-sTan.

RTU-Si Seicval a arsebul i programis konfiguracia da aRiwera maTze mierTebul i mricxvel ebis parametrebi.

central ur ofissa da qvesadgurebSi arsebul GSM modemebSi Seicval a programebis konfiguracia da maT Soris damyarda radiokavSiri.

3.4 Sesyidvebi

2007 wel s gaformda 29,646,928.45 l aris saerTo Rirebul ebis 287 xel Sekrul eba da damatebiTi SeTanxmeba sxvadasxva saqonl isa da mowyobil obebis mowodebaze, aseve teqnukur da sxva saxis momsaxurebaze. Semaj amebel i informacia gaformebul i kontraqtebisa da mimdinare Sesyidvebis Sesaxeb warmodgenil ia cxril Si.

2007 wel i	saqonl i		momsaxureba		samuSao		sul r-ba	sul Rir-ba
	r-ba	Rir-ba*	r-ba	Rir-ba	r-ba	Rir-ba		
gaformebul i kontraqtebi*	125	6,675,167	108	2,218,043	54	20,788,291	287	29,681,501
mimdinare Sesyidvebi:**								
<i>tenderi</i>	26	5,580,658	8	385,735	20	13,025,769	54	18,992,162
<i>fasTa kotireba</i>	1	32,629					1	32,629
<i>erT pirTan mol aparakeba</i>	98	1,061,880	100	1,832,308	34	7,762,522	232	10,656,710
cxril i 5								

* Rirebul eba warmodgenil ia l arebSi

** informacia moicavs Sesyidvis savaraudo Rirebul ebas

3.5 regul irebis sakiTxebi

2007 wl is ganmavl obaSi gagrZel da mWidro TanamSroml oba sawarmoTa marTvis saagentosa da semekTan.

ekonomikuri ganvitarebis saministrosa da s.s.i.p.-s `sawarmoTa marTvis saagento- daval ebis Sesabamisad S.p.s. `saqarTvel os saxel mwifo el eqtrosistemis- sawesdebo kapital Si ganxorciel da cvl il ebebi, romel ic

daamtkica s.s.i.p. `sawarmoTa marTvis saagentom. aRniSnul is Sedegad, sse-s sawesdebo kapital i Semcirda **4,125,852** l arIT da kapital idan amoRebul iqna 110 kv. el eqtrogedemcemi xazebi; Tumca 2007 wl is 28 noembridan sse-s kapital i kvl av gaizarda **8,355,594** l arIT da mis bal ansze iricxeba afxazeTis a/r-is teritoriaze arsebul i maRal i Zabvis el eqtrogadacemi xazebi da qvesadgurebi.

sawesdebo kapital is cvl il ebas unda moyves Sp.s.-is `saqarTvel os saxel mwifo el eqtrosistema- el eqtroenergiis gadacemis l icenziis danarTis modificireba, razec mimdinareobs muSaoba.

4 teqnikiuri sakiTxebi

4.1 dispetCerizacia

4.1.1 mimoxil va

2007 wl is ganmavl obaSi saqarTvel os energosistema paral el ur reJimSi muSaobda rogorc ruseTis, aseve azerbaijanis energosistemasTan: 2007 wl is pirvel naxevarSi 28 ivnisamde, aseve seqtember-oqtomberSi, 500kv egx-ze "kavkasioni" remontis dros igi paral el ur reJimSi muSaobda azerbaijanis energosistemasTan; momdevno periodSi - ruseTis energosistemasTan.

2007 wel s xel i moewera axal xel Sekrul ebeps ruseTidan/Si el eqtroenergiis importsa da eqsportze kompaniebTan, TGR-energy, EnergoPro Georgia, esko, da Tel asi.

maisidan agvistos CaTvl iT ganxorciel da el eqtroenergiis eqsporti TurqeTSi; ivl isi-agvistos TveebSi - ruseTSi; azerbaijanis energosistemaSi Cixurad viyaviT CarTul i.

inter-rao-sa da esko-s Soris avariuli situaciebis dros el . energiis Sesyidvaze gaformebuli xal Sekrul ebis safuZvel ze warmoebda el eqtroenergiis miReba da gacema.

daiwyo vardnil hesidan gamomavali 220kv Zabvis egx-ebis reabilitacia.

engurhesSi rekonstruqcia/reabilitacia Catarda #5 h/a-s.

TbosadgurebSi #3,4,9 blikebi da gazoturbina muSaobdnen stabil urad.

mimdinareobs da nawil obriv damTavrda I aj anurhesis reabilitacia.

SCADA-s proeqtis farglebSi 29 agvistodan daiwyo 220kv optikur-bolWkovani kabel is dakideba el eqtro-gadamcem xazebze, qvesadgurebSi da sadgurebSi Catarada 1-1 i l otit gatval iswinebuli meoradi wredebis mowesrigebisa da RTU-s mowyobil obebis samontaJo samuSaoebi.

4.1.2 energiis dispetCerizacia da importi

ml n.kvt.sT

dasaxel eba	I kvart-07	0II kvart'07	IIIkv-07	IVkvar-07	sul 2007
Tbosadgurebi	509.6	119.1	41	763,9	1.513.7
maregul irebeli hidrosadgurebi	1100.8	1021.6	1548	843.9	4.514.3
sezonuri hidrosadgurebi	533.7	774.9	558.82	454.4	2.321.82
importi					
ruseTi	0	0	5.6	171.6	177.1
azerbajani	28.6	27.5	27.8	23.5	107.4
somxeTi	0	0	0	0	0
TurqeTi	114	35	0	0	149
eqsporti					
ruseTi	8.5	8.4	267.3	24.5	308.7
azerbajani	23.6	53.4	24.4	8.2	109.6
somxeTi	0	0	0	0	0
TurqeTi	0	78.3	137.26	0	215.6
cxrili 6					

4.13 sistemis eqspl uataciis monacemebi

	kargvebi %	sul importi gvtST	sul eqsporti gvtST	tranziti gvtST	saqarTvel os generacia gvtST
ianvari-07	1.61%	43.2	6.9	0	771.9
Teberval i-07	2.5%	44.8	91	0	694
marti-07	1.73%	48.9	16.7	0	740.6
april i-07	1.72%	55.2	7.1	0	651.4
maisi-07	2.22%	3.3	64.5	0	651.3
ivnisi-07	2.26%	4.4	64.7	0	612.9
ivl isi-07	1.73%	0	208.4	0	797.0
agvisto-07	1.71%	3.6	180.5	0	775.5
seqtemberi-07	2.0	29.8	40.2	0	575.3
oqtomberi-07	1.85%	58.2	15.9	0	558.9
noemberi-07	2.62	69.9	4.6	0	661.9
dekemberi-07	2.21	68.2	12.2	0	841.4
cxril i 7					

4.14 gegmiuri gamoTvvis moTxovnebi

sse-m, rogorc dispetCerizaciis licenziantma, wl is ganmavl obaSi miRo sul 3669 moTxovna gegmiur, aragegmiur da avariul gamoTvaze.

Tve	sul Semosul i moTxovnebi	Sesrul da	gadai do	gauqm da an ar Sesrul da
ianvari	317	267	4	46
Teberval i	327	260	5	62
marti	322	191	109	22
april i	281	163	10	108
maisi	322	191	109	22
ivnisi	340	204	21	115
ivl isi	313	204	20	89
agvisto	224	189	7	28
seqtemberi	286	169	19	98
oqtomberi	320	192	23	105
noemberi	325	169	91	65
dekemberi	292	181	13	98
sul 2007	3669	2380	431	858
cxril i 8				

4.15 gaTiSvebis/SezRudvebis moTxovnebi da kontraqtebis registracia

- gaTiSvebi/SezRudvebi

wl is ganmavl obaSi sse-m miRo sul 52 gaTiSva/SezRudvis moTxovna kval ificiuri sawarmoebi dan:

	sul	gamoirTo	Ggauqm da	Ggadai do
kval ificiuri sawarmoebi	52	1	12	39
cxril i 9				

- **kontraqtebis registracia**

wl is ganmavl obaSi sul saregistraci od Semovida **314** pirdapiri kontraqti da **43** ganacxadi, maT Soris daregistrirda **66** pirdapiri xel Sekrul eba gadacema-dispetCerizaciis momsaxurebaze; **189** pirdapiri xel Sekrul eba el .Energiis SeZenaze; **43** ganacxadi el . energiis miRebis Sesaxeb; **17** xel Sekrul eba sarezervo simZl avris SeZenaze; registraciaze uari eTqva **42** pirdapir xel Sekrul ebas el . energiis SeZenaze.

4.16 sixSiris kontrol i

Tve	min. sixS. (Hz)	maqs. sixS. (Hz)	saS. sixS. (Hz)	sixS. stand. Ggadaxra
ianvari	48.32	51.2	50.00	0.0513
Teberval i	48.82	50.16	50.00	0.0366
marti	49.62	50.38	49.96	0.055
april i	49.28	50.20	49.95	0.0380
maisi	49.38	50.54	49.98	0.1243
ivnisi	49.52	50.26	49.96	0.0322
ivl isi	49.74	50.08	50.00	0.0244
agvisto	49.64	50.42	49.96	0.0410
seqtemberi	49.54	50.32	49.96	0.0450
oqtomberi	49.88	50.10	49.97	0.0240
noemberi	49.82	50.16	50.00	0.0197
dekemberi	49.66	50.04	50.00	0.0240
cxril i 10				

4.17 sasistemo avariebi, sistemis srul i Caqroba, sixSirul i rel eebis moqmedeba

2007 wl is ganmavl obaSi dabal i sixSiris rel eebi amuSavda 65-j er.

Tve	srul i Caqroba	nawil obrivi Caqroba	sixS. rel es moqm-is r-ba
ianvari	-	-	5
Teberval i	-	-	1
marti	-	-	6
april i	-	-	9
maisi	-	-	9
ivnisi	-	1(Caqra q/s qsanis aRmosavl eTi)	8
ivl isi	-	1(Caqra qv/s zesta fonis aRmosavl eTi)	2
agvisto	-	-	2
seqtemberi	-	-	4
oqtomberi	-	-	6
noemberi	-	-	8
dekemberi	-	1(Caqra q/s qsanSi)	5
sul 2007	-	3	65
cxril i 11			

4.1.8 avariul i gamorTvebis gamo miuwodebel i energia 220-500kv qsel Si

Tve	miuwodebel i energia kv/sT	miuwodebel i energia kv/sT	miuwodebel i energia kv/sT
	T1	T2	T3
ianvari	408,635	2,688,814	0
Teberval i	85,141	14,335	0
marti	223,553	602,924	42,153
april i	220,761	1,415,287	0
maisi	314,623	1,030,356	194,995
ivnisi	302,931	888,992	32,900
ivl isi	63,750	428,749	0
agvisto	428,733	423,929	2,500
seqtemberi	11,516	115,690	4,234
oqtomberi	61,216	36,975	0
noemberi	166,266	311,583	0
dekemberi	6,600	368,324	0
sul 2007	2,293,725	8,325,958	276,782
cxril i 12			

Seni Svna: T1 – eqspl uataciis mizeziT; T2 – gareSe faqtori; T3 – fors-maJori

4.1.9 miuwodebel i dadgmul i simZl avris xangrZl ivoba

Tve	T1+T3	muSa simZl avre (wT)	dadgmul i simZl avre (wT)
ianvari	408,635	9.29	5.40
Teberval i	85,141	1.94	1.13
marti	265,706	6.04	3.51
april i	220,761	5.02	2.92
maisi	509,618	11.59	6.74
ivnisi	335,831	7.64	4.44
ivl isi	63,750	1.45	0.84
agvisto	431,233	9.81	5.70
seqtemberi	115,750	2.63	1.53
oqtomberi	61,216	1.39	0.81
noemberi	166,266	3.78	2.20
dekemberi	6,600	0,15	0,09
sul 2007	2,570,507	60,73	35,31
cxril i 13			

4.1.10 Tboenergobl okebis da `mtkvaris" energobl okis aragegmuri gaTiSva 2007 wl is Tvebis mixedviT

MTve	Ubl oki-3		Ubl oki-4		Ubl oki-9 gaTiSvis r-ba		airturbina-1		airturbina-2	
	gaTiSvis r-ba	gaCerebis xangrZl ivoba	gaTiSvis r-ba	gaCerebis xangrZl ivoba	gaTiSvis r-ba	gaCerebis xangrZl ivoba	gaTiSvis r-ba	gaCerebis xangrZl ivoba	gaTiSvis r-ba	gaCerebis xangrZl ivoba
ianvari	1	32 sT 22 wT	1	145 sT 2wT	-	-	3	466 sT 51 wT	5	54 sT 51wT
Teberval i	-	664 sT 37wT	-	-	-	-	-	-	-	-
marti	-	-	-	220 sT	-	-	4	56 sT 48wT	5	36 sT 6wT
april i	-	-	-	2 sT 47wT	-	-	4	4 sT 1wT	8	11 sT 42wT
maisi	-	-	-	-	-	-	1	96 sT 33wT	-	-
ivnisi	-	-	-	-	-	-	-	-	-	-
ivl isi	-	-	-	-	-	-	-	-	-	-
agvisto	-	-	-	-	-	-	-	-	-	-
seqtemberi	-	-	-	-	1	90 sT 7wT	1	0 sT 10wT	1	0 sT 10wT
oqtomberi	1	49 sT 33wT	-	-	-	0	1	6 sT 7wT	2	0 sT 15wT
noemberi	1	4 sT 7wT	-	-	3	25 sT 34wT	1	4 sT 34wT	2	4 sT 27wT
dekemberi	1	10 sT	1	5 sT 17wT	1	8 sT 27wT	8	52 sT 39wT	7	46 sT 04wT
sul 2007	4	760 sT 39wT	2	373 sT 6wT	5	124 sT 8wT	23	687 sT 43wT	30	153 sT 35wT
cxrili 14										

4.2 gadacema

4.2.1 Sesaval i

gadacemis sferoSi marTvis sistemis anal izma, sse-s saSual eba misca aqcentebi gakeTebul iyo im probl emebze, roml ebic xel isSemSI el garemoebas warmoadgenda sistemis saimedo muSaobis Tval sazrisiT.

sistemaSi momxdari avariebis detal urma anal izma gviCvena, rom kvl av probl ematuri rCeboda el eqtrmowyobil obebis gamarTul i muSaoba. mraval i sakvanZo 500-220kv qvesadgurebis marTvis faris saxuravebi dazianebul i iyo da sarel eo dacvis mowyobil obebze adgil i hqonda atmosferul i nal eqebis denadobas. xel isSemSI el garemoebas warmoadgenda aseve gare faqtorebic.

saqarTvel os teritoriaze 2007 wl is pirvel kvartal Si amindis sagrZnobi gauaresebis miuxedavad (didTovl oba da Zl ieri qari) sse-s qvesadgurebis da gadamcemi xazebis saeqspl uatacio j gufabis mobil izirebul ma muSaobam minimumamde daiyvana avariebis ricxvi.

imis gaTval iswinebiT, rom sistemaSi j er kidev funqcionirebs fizikurad da moral urad moZvel ebul i el eqtromowyobil obebi, sse-s personal s periodul ad uxdeboda avariul -aRdgeniT i samuSaoebis warmoeba.

zemoaRniSnul is gaTval iswinebiT da monacemTa bazis gamoyenebiT ganisazRvra teqnikuri momsaxureobis Catarebis prioritetebi, momzadda SesaZeni masal a-mowyobil obebis CamonaTval i.

2007 wel s dasaxul i amocanebis Sesrul ebis mizniT, intensiurad mimdinareobda kapital uri dabandebis programa. kompaniasTan Areva wl is dasawyisSi xel i moewera da srul ad amoqmedda kontraqti "220-110kv amomrTvel ebis da denis transformatorebis mowodeba da montaji", romel ic iTval iswinebs 220kv qvesadgurebSi 28 el egazuri amomrTvel is montaJs Sesabamisi denis transformatorebiT da sakontrol o kabel ebiT.

xsenebul kompaniasTan aseve gaformda xel Sekrul eba "500-220kv amomrTvel ebis mowodeba da montaji qvesadgurSi "qsani". samontaJo samuSaoebi proeqtis fargl ebSi daiwyeba 2008 wl is ianvarSi.

4.2.2 wl iuri mimoxil va

2007 wl is muSaobis ZiriTadi maCvenebl ebis (ix. cxrili #16) anal izma gviCvena, rom gauaresda 220-110kv el eqtrogadacemis xazebis gamorTvebis maCvenebel i, gansakuTrebiT meore-mesame kvatral Si, rac ZiriTad gamowveul i iyo nargavebze gadafarviT gamowveul i gardamaval i mokl e CarTvebiT. aRniSnul i ganpirobebul i iyo gaCexviTi samuSaoebis CatarebasTan dakavSirebul probl emebTan. kerZod, adgil obrivi satyeo meurneobis mesveurebi ewinaaRmdegebodnen gaCexviTi samuSaoebis warmoebas. amdenad, mcdel obis miuxedavad, ver Sesrul da xazebis trasebis nargavebisagan gawmendis samuSaoebi. garda aRniSnul isa, rogorc aRiniSna, 2007 wl is pirvel kvartal Si saqarTvel os teritoriaze aRiniSneboda amindis sagrZnobi gauareseba. didTovl obam da Zl ierma qarebma gamoiwvies zogierTi el eqtrogadamcemi xazis avariul i gamorTva. muSaobis sxva

ZiriTadi maCvenebl ebis gauaresebis tendencias adgil i ar aqvs (ix. danarTi B).

2007 wel s sse-Si dasrul da inventarizaciis Sromatevadi procesi, ramac saSual eba mogvca, dadgenil iyo arsebul i material uri faseul obebi da dazustebul iyo maTi maxasiaTebul ebi. Semdgomi etapia finansuri da teqniki monacemTa bazis daxvewa/ganaxl eba. mimdinareobs el eqtrogadamcemi xazebis monacemTa bazis Seqmna.

wl is ganmavl obaSi energetikul i simZl avris axal i momxmarebl ebis el qsel ze mierTebisaTvis gaica qsel Si CarTvis 60 teqniki piroba, romel Tagan aRsani Snavia:

- Sps "qaris energia": Tbil isis zRvis mimdebare teritoriaze qsel Si CarTvis gacemul i teqniki piroba dadgmul i simZl avrit _ I etapi 24 mgvt, II etapi 65 mgvt;
- saqarTvel o-azerbaj anis damakavSirebel i 500kv el eqtrogadacemis xazis qvesadgurze "gardabani" mierTebis teqniki piroba;
- Sps "jeostili": qs-is "rustavi 220" 110 kv qsel Si CarTvis teqniki piroba, dadgmul i simZl avrit 30 mgvt;
- Sps "foTis sazRvao navsadguri": qsel Si CarTvis teqniki piroba simZl avrit 20 mgvt;

wl is ganmavl obaSi aseve gaica l icenziisaTvis saWi ro 12 teqniki piroba, romel Tagan aRsani Snavia:

- Sps "varcixe 2005";
- ss "energo-pro j orj ia";
- "xramhesi 1" da "xramhesi 2"
- Sps "zahesi 06"

garda aRniSnul isa, SeTanxm da gacemul i teqniki pirobebis Sesabamisad Sedgenil i saproeqto-saxarj TaRricxvo dokumentacia.

2007 wl is ganmavl obaSi SevizineT sxvadasxva masal a-mowyobil oba:

- | | |
|-------------------------------------------------|------------|
| • 6-220 kv Zabvis transformatorebi | 25 cal i; |
| • sxvadasxva Zabvaze denis transformatorebi | 9 cal i; |
| • sxvadasxva fprofil is kuTxovani rkina | 68 tona; |
| • proJeqtorebi | 120 cal i; |
| • transformatorebis gagril ebis el eqtrotumboeb | 15 cal i; |
| • Sual eduri Semkrebi karadebi | 164 cal i |

avtotransportis gamarTul i muSaobisaTvis SeZenil i iqna saTadarigo nawil ebi, saburavebi, zeTebi da sxva.

damtkicebul i gegma-grafikis Sesabamisad, wl is ganmavl obaSi xorciel deboda el . mowyobil obebis saeqspl uatacio profil aqtikuri da kapital uri samuSaoebi. sworad gatarebul i RonisZiebebis Sedegad el . mowyobil obebis araswori eqspl uatacia da avariebi davida minimumamde. sse-

s servis centrebma Seasrul es dagegmil i da ara gegmiuri sxvadasxva saxis 10000-ze meti samuSao, maT Soris:

- 500-220-110-35kv qvesadgurebSi kapital uri SekeTeba Cautarda Zal ovan transformatorebs, reaqtorebs, Zabvis, denis da sakuTari moxmarebis transformatorebs, zeTian da sahaero amomrTvel ebs:
 - 2007 wel s Zal ovani transformatorebis kapital uri SekeTebis gegma iTval iswinebda sul 20 Zal ovan transformators. yvel a samuSaos Sesrul ebaze gaformebul ia xel Sekrul ebebi. aqedan 4 Zal ovan transformatorze samuSaoebi dasrul ebul ia, xol o 4 transformatorze samuSaoebi mimdinareobs;
 - SekeTda 220-110-35kv amomrTvel ebis 27 kompl eqti, sakuTari Zal ebiT damontaJda 3 kompl eqti axal i el egazuri amomrTvel i.
- kompaniasTan AREVA gaformebul i kontraqtis fargl ebSi, 220kv qvesadgurebSi dagegmil i 28 axal i el egazuri amomrTvel idan damontaJda 27 amomrTvel i: 220kv - 21 kompl eqti, 110kv - 6 kompl eqti;
- qs-Si "gardabani" Sesrul da sakompresoro meurneobis sareabil itacio da sahaero magistral is modernizaciis samuSaoebi;
- 500-220-110-35kv arsebul gamTiSvel ebs CautardaT profil aqtikuri samuSaoebi;
- dasrul da 2006 wel s dawyebul i 500-220kv qvesadgurebis Senobebis da marTvis farebis gadaxurvis sareabil itacio samuSaoebi;
- kaxeTis regionSi, siRnaRis raionis el eqtroenergiIT momaragebis imedianobis gazrdis mizniT, sareabil itacio samuSaoebi Catarda 35kv qs-Si „siRnaRi“ da mis mkvebav xazze.
- 35-110-220kv el eqtrogadamcem xazebze aRdga kuTxovanebisagan gaZarcul i anZebi, Seicval a dazianebul i izol atorebi, gamagrda saZirkvl ebi, Seicval a avariul i sayrdenebi, Sesrul da sarekonstruqcio samuSaoebi anZebis damatebiT, trasis Secvl iT;
- rogorc zemoT aRiniSna, ver Catarda srul i mocul obiT el eqtrogadamcemi xazebis trasebis gaCexviTi samuSaoebi gegma-grafikis Sesabamisad.
- 2007 wl is ganmavl obaSi gansakuTrebul i yuradReba eqceoda SCADA proeqtTan dakavSirebul sareabil itacio samuSaoebis, maT Soris:
 - dasrul da im el eqtrogadamcemi xazebis reabil itacia, roml ebic proeqtis xel mZRvanel obis azriT warmoadgenda samuSaoTa warmatebiT ganxorciel ebis xel SemSl el garemoebas;
 - sarel eo dacvis special istebi aqtiurad monawil eobdnen qvesadgurebSi proeqtiT gaTval iswinebul i signal ebis misaRebad saWiro RonisZiebebSi. samuSaoebi gagrZel deba 2008 wel Sic.
- Sromatevadi samuSaoebi Catarda aRricxvis kvanZebis reabil itaciis programis fargl ebSi. 500-220kv qvesadgurebSi damontaJda el eqtronul i mricxvel ebi, kabel ebi da karadebi. programis mixedviT ganaxl ebas eqvemdebareboda 500-mde aRricxvis wertil i; 2007 wel s ganxorciel da 293 mricxvel is reabil itacia, roml ebic CairTo "al fa centrSi" da

informaciis miReba moxmarebul i el eqtroenergiis Sesaxeb xorciel deba saTao ofisSi;

- 500-220kv qvesadgurebSi mimdinareobda signal ebis Sual eduri Semkrebi karadebis montaJi. samuSaoebi amJamadac mimdinareobs;
- Sedga 500kv egx-ze "imereTi"/d.zestafoni-enguri/ axal i cifrul i dacvis terminal is SeZena, montaJi, gawyoba-gaSveba;
- 2007 wl isaTvis qvesadgurebis inJiner-teqniki personal i, servis cetrebis saxazo da saremontო brigadebi damatebiT dakompl eqtda spectansacml iT, specfexsacml iT da ind.dacvis saSual ebebiT, gadasatani afTiaqebiT;
- servis centrebSi arsebul i adgil obriv sakval ifikacio komisiebis mier dadgenil vadebSi codnis Semowmeba gaiara 509 TanamSromel ma, xol o ofisSi Seqmnil central ur mudmivmoqmed sakval ifikacio komisiaSi codnis Semowmeba gaiara 64 TanamSromel ma;
- dafiqsirda usafrTxoebis da eqspl uataciis wesebis darRvevis Semdegi faqtebi: qs "I isi"- usafrTxoebis teqniki wesebis punqti 3.2.1, qs "qsani-500"- usafrTxoebis teqniki wesebis punqti 4.6.1, qs "navTI uRi-220" – teqniki eqspl uataciis wesebis punqtebi: #6.7.3, #6.7.6, #6.7.7, #6.8.9;
- moxda erTi ubeduri SemTxveva fatal uri SedegiT. Seiqmna komisia, romel mac moikvl ia ubeduri SemTxveva da Seadgina Sesabamisi aqti;

SemuSavda 2008 wl is Sesyidvebis gegma da teq-momsaxurebis saoperacio biuj eti sistemis obieqtebis qmediTunarianobisa da saimedobis Semdgomi gaumj obesebis mizniT, rac moicavs marTvis intensiuri programebis ganxorciel ebas 2008 wl is ganmavl obaSi (ix. cxrili #.15).

4.2.3 2008 wl is teq. momsaxurebis saoperacio biuj eti (xel fasebis gareSe)

		Rirebul eba lari
1	qvesadgurebi	
	(500-220-110-35kv)	
	Semowmeba	36 000
	profil aqtikuri SekeTeba	12 000
j ami 1:		48 000
2	el eqtrogadamcemi xazebi (220-110-35kv)	
	Semowmeba	18 000
	profil aqtikuri SekeTeba	70 000
j ami 2:		88 000
3	qs-ebisa da egx-ebis profil aqtikuri samuSaoebi	
	saTadarigo nawil ebi, qimiuri WurWel i da sxv.	1 407 422
	traqtori, amwe, kal aTa da sxv.	25 000
	avariuli momsaxureoba	478 000
j ami 3:		1 910 422
4	saofise xarj ebi (mivl ineba)	195 938
	qs-bis sareleo dacvis, usafRTx-is da aRricxvis eqspl uatacia (mivl ineba)	67 560
j ami 4		263 498
5	intel eqtual uri momsaxurebis Sesyidva	
	mowyobil obebis damowmeba	12 500
	akreditacia	3 000
	qsel ebis proeqtebis SeZena	400 000
	energოსისტემის ავარიის საინაშენი ავტომატიკის პროექტი	150 000
	sakonsul tacio momsaxurebis kontraqtis Tanadafinanseba	570 000
	qs-bis da egx-bis sqemebi	50 000
el eqtrosისტემის qs-bis sqemebi	100 000	
j ami 5:		1 285 500
6	momsaxureobis Sesyidva	
	Targmna	10 000
	Senobis ij ara	3 300
j ami 6:		13 000
7	spec.tansacmeli, damcavi saSual ebebi, samedicino trenajori da sxva	183 000
j ami 7:		183 000
8	qvesadgurebis teritoriebisა და komunikaciebis mowyoba	1 127 000
j ami 8:		1 127 000
9	sazomi instrumentebi, gardamavali procesebis parametrebis registratori	1 015 989
j ami 9:		1 015 989
10	axali el .mowyobil obebis და sakontrol o kabel ebis SeZena, montaji	4 305 194
j ami 10:		4 305 194
11	el .mowyobil obebis remonti	2 158 500
j ami 11:		2 158 500
12	qs-is "navTI uRI" reabilitacia (el .mowyobil obebis SeZena)	6 014 000
j ami 12:		6 014 000
13	qs-is "gali" reabilitacia	320 000
j ami 13:		320 000
14	el eqtrogadamcemi xazebis remonti	7 558 000
j ami 14:		7 558 000
15	qs #704-is saremontო samuSaoebi	150 000
j ami 15:		150 000
16	qs "dzestafoni"- egx-s "imereTi" cifruli dacvebi	400 000
j ami 16:		400 000
17	SCADA programisaTvis samuSao detail ebi	50 000
j ami 17:		50 000
sul 2008 weli:		26 891 103
cxrili 15		

4.2.4 2007 wl is muSaobis ZiriTadi maCvenebl ebi

muSaobis ZiriTadi maCvenebl ebi 500-220 kv qsel iTvis		2007 wel i
1) mwyobridan gamosul i ZiriTadi el .mowyobil obebi (mimdinare periodi)	a) transformatorebi da reaqtorebi	2
	b) amomrTvel ebi	20
	g) denis transformatorebi	6
	d) Zabvis transformatorebi	6
	e) gamTiSvel ebi	10
	v) akumul atorebi	0
	z) kompresori	9
	T) dazianeba 6-10kv uj redebSi	8
	i) saWi ro axial i satransformatoro zeTebis raodenoba (tona)	489
2) mwyobridan gamosul i ZiriTadi el .mowyobil obebi (xangrZi ivi droiT)	a) transformatorebi da reaqtorebi	67
	b) amomrTvel ebi	165
	g) denis transformatorebi	99
	d) Zabvis transformatorebi	44
	e) gamTiSvel ebi	76
	v) akumul atorebi	0
	z) kompresorebi	7
	T) dazianeba 6-10kv uj redebSi	161
3) meoradi saSual ebebi	a) dacvis moqmedebis saerTo raodenoba	725
	b) dacvis swori moqmedebis raodenoba	681
	g) dacvis efeqturobis maCvenebl i	0.94
	d) dacvis sqemis dazianeba	42
	e) mwyobridan gamosul i dacvis sqemebis raodenoba (7 dRe da meti)	88
4) aRricxva	a) aRricxvis wredebis dazianeba	16
	b) SesakeTebel i aRricxvis wredebis raodenoba	0
	g) aRricxvis wredebis muSaobaSi Carevis faqtobis raodenoba	0
	d) eqspl uataciaSi Seyvanil i mricxvel ebis raodenoba	119
5) sahaero el . gadamcemi xazebi (mimdinare periodi)	a) 220 kv mimdinare dazianebis raodenoba	80
	g) 110 kv mimdinare dazianebebis raodenoba	50
	d) 35kv mimdinare dazianebis raodenoba	3
6) sahaero el . gadamcemi xazebi (xangrZi ivi droiT)	a) 220 kv xazi mwyobridan gamosul i	3
	b) 110 kv xazi mwyobridan gamosul i	10
	g) 35 kv xazi mwyobridan gamosul i	22
7) usafrTxoebis wesebis	a) fizikuri travma (samuSao saaTebSi)	0
	b) mZime fizikuri tramva (samuSao saaTebSi)	1
darRvevebi da	g) mZime fizikuri tramva (ara samuSao dros)	0
incidentebi	d) TanamSroml is mier daSvebul i nebi smieri darRveva (samsaxurSi)	4
cxrili 16		

5 donori organizaciebis mier dafinasebul i proeqtebi

5.1 el eqtroenegiis bazris mxardamWeri proeqti (EMSP), msofl io bankis krediti No.3502GE da 3502-1GE

5.1.1 msofl io bankis sakredito resursebi da aTvisebul i Tanxebi

msofl io banksa da saqarTvel os finansTa saministros Soris 2001 wl is 18 ivniss gaformebul i ganviTarebis sakredito xel Sekrul ebisa (21,1ml n SDR) da 2004 wl is pirvel ivl iss xel moweril i damatebiTi sakredito xel Sekrul ebis (2,5ml n SDR) Tanaxmad, msofl io bankis sakredito resursebi Seadgens 23,6 SDR-s. kreditis daxurvis Tavdapirvel i TariRi iyo 2007 wl is 31 dekemberi.

vinaidan SCADA komponentis ganxorciel eba moITxovs el eqtroenegiis bazris mxardamWeri proeqtis dasrul ebisaTvis gansazRvrul droze mets, sakredito resursebidan Tanxebis aTvisebis vadis gadawevis Taobaze sse-s moTxovnis safuZvel ze, msofl io banki da finansTa saministro daTanxmdnen kreditis daxurvis TariRis erTi wl iT gadavadebas 2008 wl is 31 dekembramde (sabol oo SeTanxmeba miRweul iqna 2007 wl is martSi).

msofl io bankma uzrunvel yo sakredito saxsrebis real okacia da ganviTarebis sakredito xel Sekrul ebaSi Sesabamisi cvl il ebebis Setana, sadac gaTval iswinebul i iyo proeqtis momsaxure organizaciis (PSO) sabiuj eto da saStato resursebSi Setanil i cvl il ebebi.

msofl io bankis sakredito resursebidan 2007 wl is 31 dekembrisaTvis aTvisebul i Tanxebi Seadgens 15 864 288 aSS dol ars, xol o adgil obrivi Tanadafinaseba - 3 644 953 aSS dol ars. qvemoT mocemul i me-19 cxril i gviCvenebs sakredito Semosavl ebidan dafinasebul kategoriebSi Tanxebis aTvisebisa da l arebSi ganxorciel ebul i Tanadafinasebis mdgomareobas gamoxatul s aSS dol arebSi.

kategoria	msofl io banki USD	adgil obrivi Tanadafinaseba USD
saqonel i da mowyobil oba	7 219 586	14 520
marTvis momsaxureba	5 760 471	3 190 530
sakonsul tacio momsaxureba da auditi	1 336 297	241 125
inkremental uri saoperacio xarj ebi	627 131	196 529
proeqtis momzadebis dafinaseba	121 238	2 249
naSTi special ur angariSze	799 564	0
sul	15 864 288	3 644 953
cxril i 17		

me-18 cxril Si mocemul ia TiToeul i kategoriisaTvis kreditidan gamoyofil i, aTvisebul i da auTvisebel i Tanxebi SDR-Si 2007 w. 31 dekembris mdgomareobiT.

kategoria	gamoyofil i SDR	aTvisebul i SDR	auTvisebel i SDR
saqonel i da mowyobil oba	16 597 000	4 726 639	11 870 361
marTvis momsaxureba	3 987 172	3 987 172	0
sakons. momsax. da auditi	1 890 000	892 870	997 130
inkremental uri saoperacio xarj ebi	520 000	421 810	98 190
gaunawil ebel i	513 507	0	513 507
proeqtis momzadebis dafinaseba	92 321	92 321	0
sul	23 600 000	10 120 812	13 479 188
cxril i 18			

5.1.2 saqonel i da mowyobil oba

5.1.2.1 SCADA da tel ekomunikaciis proeqti

tenderSi gamarj vebul avstriul kompaniasa (Siemens Aktiengesellschaft Osterreich - SemdgomSi «kontraqtori») da sse-s Soris SCADA da tel ekomunikaciis proeqtTan dakavSirebiT 2006 wl is 30 oqtomers gaformebul i 11,025,011 evros Rirebul ebis kontraqti Zal aSi Sevida 2007 wl is 2 ianvars, kontraqtoris sasargebl od akreditivis gaxsnisa da avansis gadaxdis Semdgom.

2007 wl is ganmavl obaSi proeqtis fargl ebSi ganxorciel da Semdegi ZiriTadi samuSaoebi:

zogadi:
ganxorciel da 11 cvl il eba kontraqtiSi Semdegi sakiTxebis Taobaze: - cvl il eba tel ekomunikaciis sistemebSi Tbil isis teritoriaze da cvl il ebebi SCADA/EMS da gare (Ria gamanawil ebel) sistemebSi; - cvl il eba SCADA/EMS-is aparaturasTan (hardware) dakavSirebiT; - cvl il ebebi SCADA/EMS-is gare sistemebSi; - tel ekomunikaciebis mowyobis principi (koncefcia); - cvl il ebebi SCADA/EMS gardamsaxis tipTan dakavSirebiT; - damatebiTi garantirebul i kvebis wyaro (UPS) erovnul centrSi SCADA/EMS-sTvis; - cvl il eba SCADA/EMS-is aparaturasTan (hardware) dakavSirebiT; - satel efono sistemis (PABX) gafarToeba Tbil isSi; - hidroTermul i koordinaciis programul i uzrunvel yofis modul is ganxorciel eba (HTC); - cvl il eba optikur-boWkovani kabel ebis kavSirebSi - maRal sixSirul i kavSiris mowyobil obebisaTvis (PLC) drosel ebisa da kondensatorebis mowodeba.
SCADA/EMS:
- monacemTa bazis SeqmnisaTvis saWiro kompiuterul i sistemis da Sesabamisi saofise avej is mowodeba; - qvesadgurebis model ireba da Sesabamisi nimusebis gadacema kontraqtorisaTvis; - sarelo dacvis sistemebis signal ebis mopovebis mizniT 1-el l otSi Semaval i 10 q/s-isaTvis proeqtis momzadeba; - RonisZiebebis dagegmva/gatareba signal ebis gansaxorciel ebl ad aucil ebel i masal ebis Sesazenad da RTU-s signal ebis momzadeba da Seyvana kontraqtoris monacemTa bazaSi; - EMS funqciisaTvis saWiro monacemebis mopoveba; - mowyobil ebebis mowodeba da sasawyobo miReba.
RTU da gare sistemebis adaptireba:
- 1-el i l otisaTvis RTU-s pirvel i partiebis momzadeba - gardamqmnel ebisaA da uj redebis SekveTa; - axali tipis RTU-ebis gamoyenebis gegmis SemuSaveba q/s-is axali aparaturiT aRWurvis proeqtebis SCADA proeqtTan Sesabamisobis uzrunvel sayofad; - sasawyobo miReba da 1-l i l otis q/s-Si aparaturis montajisa da kabel ebis mierTeba; - mosamzadebel i samuSaoebi me-2 l otis q/s-ebSi; - funqcional uri sadgurebis naxazebis damtkiceba;
tel ekomunikacia:
- ats-isa da tel ekomunikaciis axali sqemis damtkiceba; - satel efono sistemis mowodeba/sasawyobo miReba; - mzadeba PLS da SDH/PDH mowyobil ebebis sasawyobo miRebisaTvis.
optikur-boWkovani kavSirebi:
- miwisqueSa kabel is marSrutebis proeqtis damtkiceba; - kabel is dakidebis samuSaoebis dasrul eba xazebze: didube, surami, didgori, lomTagora, koda-2, vel i 1,2; - miwisqueSa kabel ebis Cadebis samuSaoebis dasrul eba proeqtiT gaTval isiwnebul i marSrutebis Sesabamisad.
damxmare mowyobil ebebi:
- sardafis saremonto samuSaoebis Sesrul ebaze tenderis gamocxadeba; - proeqtSi Semaval i gadamcemi xazebis reabilitaciis samuSaoebis dasrul eba; - masal ebis Sesyidva saTao ofisis oTaxebSi satel efono xazebis gasayvanad.

qvemoT mocemul i cxril i gviCvenebs proeqtis fargl ebSi gansaxorciel ebel ZiriTad RonisZiebebs, Tavdapirvel vadebs da faqtobrivi Sesrul ebis TariRebs, aseve 2007 wl is dekembris monacemebiT proeqtis mimdinareobis mdgomareobas. kontraqtoris mier dekembris TveSi dasamtkicebl ad warmodgenil i proeqtis ganxorciel ebis ganaxl ebul i gegma-grafikis mixedviT, proeqtis dasrul deba navaraudevia 2009 wl is ianvarSi.

ZiriTadi RonisZiebebi	Tavdapirvel i vada, 2004 wl is seq-noem.	winasastarto Sexvedris Semdeg ganaxl . vada	ganxorciel e ba an ganaxl ebul i vada	statusi
kontraqtis xel mowera	2005-12-02		2006-10-30	dasrul da
wina-sastarto Sexvedra			2006-11-16	dasrul da
msofi io bankis Setyobineba avansis gadaxdis Taobaze			2006-12-27	dasrul da
kontraqtis Zal aSi Sesvla			2007-01-02	dasrul da
sastarto Sexvedra kontraqtorTan	2006-01-04	2007-01-20	2007-01-25	dasrul da
samuSaos mocul obis, saproeqto dokumentaciis damtkiceba	2006-04-13	2007-05-21	2008-02-29	dagegmil ia
monacemTa Seyvanis sistemis montaJi	2006-02-22	2007-03-19	2007-03-31	dasrul da
monacemTa bazisa da suraTebis Semowmeba qarxnul i miRebisaTvis	2006-07-06	2007-07-06	2007-07-13	dasrul da
dasrul ebul i monacemTa bazisa da suraTebis testireba	2007-03-21	2007-10-26	2008-02-15	dagegmil ia
SDH/PDH mowyobil obis qarxnul i miRebis testirebis dasrul eba	2006-08-28	2007-06-19	2008-03-07	dagegmil ia
PLC mowyobil obis qarxnul i miRebis testirebis dasrul eba	2006-08-28	2008-01-17	2008-03-07	dagegmil ia
VoIP da satel efono mowyobil obebis qarxnul i miRebis testirebis dasrul eba	2006-08-28	2007-07-17	2007-11-23	dagegmil ia
RTU-ebis qarxnul i miRebis testirebis dasrul eba	2006-05-16	2007-06-19	2007-11-23	dasrul da
SCADA/EMS sistemis qarxnul i miRebis testirebis dasrul eba	2006-08-17	2007-11-16	2007-11-30	dasrul da
SCADA/EMS mTavari sadguris winaswari gaSveba	2007-07-12	2008-01-03	2008-05-02	dagegmil ia
SCADA/EMS sistemis adgil ze miRebis testirebis dasrul eba	2007-10-04	2008-06-18	2008-08-20	dagegmil ia
RTU-ebis montajisa da adaptirebis samuSaoebis dawyeba	2006-05-05	2007-09-11	2007-11-05	dasrul da
I oti 1-is RTU-ebisa da saadaptacio samuSaoebis eqspl uataciaSi gaSveba	2006-04-12	2008-01-28	2008-06-25	dagegmil ia
I oti 2-is RTU-ebisa da saadaptacio samuSaoebis eqspl uataciaSi gaSveba	2007-10-04	2008-05-05	2008-09-24	dagegmil ia
I oti 3-is RTU-ebisa da saadaptacio samuSaoebis eqspl uataciaSi gaSveba	n.a.	2008-08-25	2008-12-03	dagegmil ia
RTU-ebis testirebisa da gareT dasamontaJebel i mowyobil obebis adaptirebis samuSaoebis dasrul eba	2007-10-04	2008-09-10	2008-12-03	dagegmil ia
OPGW/ADSS/UGC tipis kabel ebis Semowmebis dawyeba	2007-02-26	2007-02-26	2007-05-03	dasrul da
OPGW/ADSS/UGC tipis kabel ebis Semowmebis dasrul eba	2006-11-20	2007-04-27	2007-07-13	dasrul da
OPGW tipis kabel ebis dakidebis samuSaoebis dawyeba		2007-05-23	2007-09-05	dasrul da
OPGW/ADSS bol o kavSiri mzad yofna gasaSvebad	2007-09-15	2007-11-13	2008-06-04	dagegmil ia
damxmare samuSaoebis mocul obis damtkiceba		2007-03-01	2008-02-29	dagegmil ia
central ur sadispetCeroSi UPS-is dizel generatoris eqspl uataciaSi gaSvebis dasrul eba	2007-09-15	2007-12-20	2008-03-14	dagegmil ia
central ur sadispetCeroSi dizel generatoris eqspl uataciaSi gaSvebis dasrul eba	2007-09-15	2007-12-20	2008-04-30	dagegmil ia
central ur sadispetCeroSi mudmivi denis mowyobil obebis eqspl uataciaSi gaSvebis dasrul eba	2007-09-15	2008-01-03	2008-05-16	dagegmil ia
mi Reba-Cabarebis aqti	2007-10-11	2008-10-08	2009-01-07	dagegmil ia
cxril i 19				

qveმოT cxრიl Si warmodgenilia proeqtis ganxorciel ebis procentul i maCvenebl ebi komponentebis mixedviT:

komponenti	dizaini		damzadeba/awyoba qarxnul i miRebis testirebis/winaswari testirebis CaTvl iT		montaji/gaSveba	
	dagegmi li	Sesrul eba	dagegmi li	Sesrul eba	dagegmi li	Sesrul eba
SCADA/EMS						
teqnikuri uzrunvel yofa	100 %	100 %	100 %	90 %	0 %	0 %
<u>programul i uzrunvel yofa:</u>						
SCADA-s funqciebi	100 %	100 %	100 %	100 %	0 %	0 %
EMS-is funqciebi	100 %	100 %	100 %	100 %	0 %	0 %
standartul i mocul oba	100 %	100 %	100 %	100 %	0 %	0 %
HTC (cvl il eba #9)	80 %	80 %	0 %	0 %	0 %	0 %
NAS-is funqciebi	100 %	100 %	100 %	100 %	0 %	0 %
monac.Seyvana da suraTis Seqmna (sse)	100 %	100 %	100 %	100 %	75 %*	75 %*
RTU da garesistemebis adaptireba						
l oti 1	100 %	100 %	100 %	100 %	0 %	30 %
l oti 2	100 %	100 %	80 %	30 %	0 %	0 %
l oti 3	0 %	0 %	0 %	0 %	0 %	0 %
tel ekomunikacia						
SDH/PDH	100 %	100 %	90 %	60 %	0 %	0 %
maRal sixSirul i kavSiris mowyobil obebi (PLC)	100 %	100 %	100 %	80 %	0 %	0 %
mikrotal Rovani kavSirebi	100 %	100 %	100 %	100 %	0 %	0 %
PABX	100 %	100 %	100 %	100 %	0 %	0 %
optikur-boWkovani kavSirebi						
optikur-boWkovani kabel ebi (OPGW)	100 %	100 %	84 %	87 %	100 %	29 %
miwisqveSa kabel ebi (UGC)	100 %	100 %	100 %	100 %	100 %	50 %
damxmare mowyobil ebebi						
dizel is generatori central uri sadispetCerosTvis (NCC)	100 %	100 %	100 %	0 %	0 %	0 %
UPS centr. sadispetCerosTvis (NCC)	100 %	100 %	100 %	0 %	10 %	0 %
kondicioneri centr.sadispetCerosTvis (NCC)	100 %	100 %	100 %	10 %	0 %	10 %
gare sistemebis el . momarageba	100 %	100 %	30 %	30 %		
cxრიl i 19						

SeniSvna: * mocemul i procentul i maCvenebl i exeba mxol od monacemTa Seyvanis komponents

5.1.2.2 220v batareebi da dammuxtvel ebi

2007 wl is ianvris bol os dasrul da qarTul kompania Iberiatrading Ltd.-Tan 2006 wl is 21 Teberval s xel moweril i kontraqtis fargl ebSi mowodebul i 220v batareebisa da dammuxtvel ebis montaJi.

5.1.2.3 aRricxvis mowyobil obebi da sistemebi

2006 wel Si dasrul da sabiTumo mricxvel ebis mowodebis Sesaxeb 2006 wl is 12 ianvars Elster Metronica-sTan gaformebul i kontraqtiT gaTval iswinebul i saqonl is mowodeba. gamricxvel ianebis proeqti agreTve moicavs momsaxurebas, rogoricaa samontaJo samuSaoebis zedamxedvel oba, Treiningi (mricxvel is kabinetebi, tel ekomunikacia da monacemTa Segroveba), awyoba, teqnikuri da programul i uzrunvel yofis instal acia, rac unda ganaxorciel os sse-m, da saeqspl uatacio testireba. amitom kontraqtis Rirebul eba aseve moicavs xarj ebs momwodebl is mier Sesrul ebul i momsaxurebisatvis.

2007 wl is ganmavl obaSi sse axorciel ebda kontraqtiT gaTval iswinebul samontaJo samuSaoebs, kerZod:

mricxvel ebi	raodenoba	Sesrul ebis % maCvenebl i
kontraqtiT gaTval iswinebul i	304	100,0
damontaJebul i da mierTebul i	251	82,6
damontaJebul i da misaerTebel i	39	12,8
dazianebul i da gamosacvl el i	14	4,6
cxril i 20		

kontraqtis fargl ebSi gaTval iswinebul i samuSaoebis dasrul eba gansazRvrul i iyo 2007 wl is dekemberSi. garkveul i obieqturi mizezebis gamo, ver moxerxda samontaJo samuSaoebis dasrul eba dadgenil vadaSi. 2008 wl is dasawyisSi gansakuTrebul i yuradReba daeTmoba Sesabamisi RonisZieebis gatarebas mdgomareobis gamosasworebl ad.

5.1.2.4 220/110kv amomrTvel ebi da denis transformatorebi

sse-s qvesadgurebSi 220/110kv amomrTvel ebisa da denis transformatorebis mowodeba-montaJis proeqtTan dakavSirebul kontraqts, saerTo Rirebul eba 2,445,189.01 evro, kompaniasTan AREVA Energietechnik GmbH xel i moewera 2007 wl is 15 ianvars da Zal aSi Sevida 2007 wl is 16 Teberval s. 2007 wl is ganmavl obaSi mimdinareobda kontraqtiT gaTval iswinebul i samuSaoebi.

qvemoT cxril Si warmodgenilia monacemebi proeqtis fargl ebSi mowyobil obaTa montaJis mimdinareobis Sesaxeb 2007 wl is 31 dekembris mdgomareobiT:

	qvesadguri	kontraqti T gaTval iswinebul i			mimdinareobs montaJi	damontaJda	darCeni l ia	gaSvebul ia	
		mowyobil oba	kv	r-ba				r-ba	%
1	navTI uRi-220	amomrTvel i	220	1				1	100
2	l isi-220	amomrTvel i	220	1				1	100
		amomrTvel i	110	2				2	100
3	gl dani-220	amomrTvel i	220	4	1		1	2	50
4	rusTavi-220	amomrTvel i	220	2			1	1	50
		d/transf-ri	220	6				6	100
5	xaSuri-220	amomrTvel i	220	5	1			4	80
		d/transf-ri	220	15	3			12	80
6	gori-220	amomrTvel i	220	4		1		3	75
		d/transf-ri	220	12		3		9	75
7	menj i-220	amomrTvel i	220	5		1		4	80
		d/transf-ri	220	12				12	100
8	quTaisi-220	amomrTvel i	110	4				4	100
cxril i 21									
	sul	amomrTvel i	220	22	2	2	2	16	72,7
		amomrTvel i	110	6				6	100
		d/transf-ri	220	45	3	3		39	86,7

5.1.2.5 500/220kv amomrTvel ebis Secvl a qsanis qvesadgurSi

500/220kv qsnis qvesadgurze amomrTvel ebis mowodeba-montaJis proeqtTan dakavSirebul i kontraqti gaformda germanul kompaniasTan AREVA Energietechnik GmbH 2007 wl is 3 maiss saerTo Rirebul ebiT 1,411,805 evro. proeqtis fargl ebSi mowyobil obebis mowodeba daiwyo 2007 wl is oqtomberSi, xol o samontaJo samuSaoebis dawyeBa dagegmil ia 2008 wl is ianvris Sua ricxvebSi.

kontraqtis Tanaxmad, saproeqto Ronisziebebis ganxorciel ebis dasrul eba dagegmil ia 2008 wl is ivnisSi.

5.1.3 sakonsul tacio momsaxureba

5.1.3.1 sse-s da el eqtroenergiis bazris mxardamWeri proeqtis auditi _ 2006-2007 finansuri wl ebi

- **sse-s da el eqtroenergiis bazris mxardamWeri proeqtis 2006 w. auditi:** 2006 wl is 31 dekembers dasrul ebul i wl isaTvis sse-s da el eqtroenergiis bazris mxardamWeri proeqtis finansuri angariSebis auditis Casatarebl ad erT pirTan mol aparakebis meTodiT SeirCa kompania Deloitte & Touche. sse-sa da kompania Deloitte & Touche-s Soris 135,000 aSS dol aris Rirebul ebis kontraqti gaformda 2007 wl is 12 ivniss. finansuri angariSebis auditis angariSi msolfio banks gaegzavna seqtemberSi, xol o sse-s finansuri angariSebis auditis angariSi yvel a dainteresebul pirs daegzavna noembris TveSi.

-
- **sse-s da el eqtroenergiis bazris mxardamWeri proeqtis 2007 w. auditi:** 2007 wl is 31 dekembers dasrul ebul i wl isaTvis sse-s da el eqtroenergiis bazris mxardamWeri proeqtis finansuri angariSebis auditis Casatarebl ad mimdinareobs auditoris SerCevis procesi erT-pirTan mol aparakebis meTodiT. msofli o bankis Tanxmobis Semdgom, moTxovna winadadebis warmodgenaze savaraudod gaegzavneba kompanias «Deloitte and Touche».

5.1.3.2 **garemos dacvis samoqmedo gegma**

sse-s mier damtkicebul i garemos dacvis samoqmedo gegma msofli o banks gaegzavna 2007 wl is noemberSi.

5.2 EMSP, KfW-s krediti #.2000 65 334; el eqtroenergiis gadacemis reabil itaciis programa II: 12,783 ml n evro

2007 wl is pirvel kvartal Si damTavrda proeqtiT gaTval iswinebul i 500/220/110kv aqtivebis reabilitaciis yvel a samuSao da sse-sa da kontraqtors Soris 2007 wl is ianvarSi gaformda sabol oo miReba-Cabarebis aqtebi.

kreditis darCenil i TanxiT 2007 wl is me-2 kvartal Si sse-m SeukveTa damatebiTi mowyobil obebi da saTadarigo nawil ebi, romel Ta mowodeba dasrul da 2007 wl is dekemberSi.

qvemoT mocemul i cxril i gviCvenebs 2007 wl is 31 dekembrisaTvis KfW-s sakredito resursebidan Tanxebis aTvisebis mdgomareobas:

saproeqto Ronisziebi	kreditis Tanxa	darezervebul i	aTvisebul i	naSTi
	EUR	EUR	EUR	EUR
mT. kontraqtori		9 332 226,55	9 332 226,54	0,01
menej m-kontraqtori		1 020 000,00	1 020 000,00	0
sakons. momsaxureba		930 027,00	930 027,00	0
sadispozicio fondi		1 500 000,00	1 500 000,00	0
gaunawil ebel i		0	-1421,54	
sul		12 782 253,55	12 780 832,00	1 421,55
sul krediti	12 782 297,03			1 465,03
cxril i 22				

Seni Svna: sakredito angariSze darCenil ia 1 465,03 evro. kreditis daxurva ganxorciel deba Sesabamisi procedurebis dacviT.

5.3 regional uri qsel is reabil itacia I - KfW-s krediti #.2003 66 708

proeqtis saxel wodeba:	germaniis finansuri TanamSroml oba saqarTvel osTan regional uri el eqtro qsel is reabil itacia I, kreditis No.2003 66 708; sexxis mocul oba: 10 ml n evro
mizani:	proeqti iTval iswinebs saqarTvel osa da somxeTs Soris damakavSirebel i 220kv gadamcemi xazis da oTxi qvesadguris komponentebis reabilitacias, roml is mizania el . energi iT vaWrobis gaumj obeseba mezobel qveynebs Soris da el . energiis usafrTxo miwodebis uzrunvel yofa gansakuTrebiT Tbil isis centrisaTvis.
sakredito resursebidan dafinasebul i saproeqto RonisZiebebi:	o gardabnis, l isis, marneul isa da didubis qvesadgurebis nawil obrivi reabil itacia, im mocul obiT rac saWi ro iqneba somxeTidan el . energiis Tavisufal i SemodinebisaTvis; o somxeTis sazRvramde da qvesadgurebs Soris gadamcemi xazebis (65km) reabil itacia; o sakonsul tacio momsaxureba
sasesxo da saproeqto xel Sekrul ebis Tari Ri:	2005 wl is 1 ivnisi
sasesxo da saproeqto xel Sekrul ebis gansakuTreb. SeTanxmebis Tari Ri:	2005 wl is 1 ivnisi
sasesxo da saproeqto xel S- is ratifikaciis Tari Ri:	2005 wl is 30 ivnisi, parl amentis dadgenil eba #1835-rs
qvesasesxo xel S- is Tari Ri:	2006 wl is 14 agvisto
kreditis daxurvis Tari Ri:	2008 wl is 31 marti
proeqtis mimdinareoba:	
SerCeul i konsul tanti:	Fichtner GmbH & Co KG
sakonsul t. momsaxurebis kontraqtis xel mow. Tari Ri:	2006 wl is 12 seqtemberi
mTavari kontraqtori:	Siemens AG Osterreich
kontraqtis xel mow. Tari Ri:	2007 wl is 21 noemberi
proeqtis ganxorc. periodi:	16 Tve
proeqtis dasrul ebis savaraudo Tari Ri:	2009 wl is mai si
miRweul i progresi 2007 wl is 31 dekembris mdgomareobiT:	2007 wl is 21 noembers xel i moewera 10,105,483.27 evros Rirebul ebis sakontraqto SeTanxmebas tenderSi gamarj vebul avstriul kompaniasTan "Siemens AG Osterreich". kontraqtoris mier warmodgenil i invoicebis, avansis gadaxdisa da samuSaos Sesrul ebis sabanko garanti ebis safuZvel ze, sse-m dekemberSi gadaixada kontraqtis Rirebul ebis 20%-is (avansis) Tanadafinansebis nawil i. kontraqti Zal aSi Seva kontraqtoris angariSze KfW-s mier dasafinasebel i avansis Tanxis darCenil i nawil is gadaricxvisTanave.
cxril i 23	

"regional uri el eqtroqsel is reabil itacia I" programis ganxorciel ebis mizniT germaniis rekonstruqciis sakredito bankTan (KfW) 2005 wl is 1 ivniss gaformebul i sakredito da saproeqto xel Sekrul ebis Tanaxmad, kreditis daxurvis Tari Ria 2008 wl is 31 marti. vinaidan, sakredito da saproeqto xel Sekrul eba Zal aSi Sevida xel moweridan 13 Tvis Semdeg, 2006 wl is 20 ivl iss (q/s-is "gardabani" aqtivebis sse-saTvis gadacemis Semdeg, rac sakredito resursebidan Tanxebis moxsnis winapirobas warmoadgenda); mTavar kontraqtortan xel Sekrul ebas xel i moewera 2007 wl is 21 noembers (dagegmil ze 3 TviT gvian) da mxareTa SeTanxmebis Tanaxmad, kontraqtis moqmedebis vadaa 16 Tve, anu dasrul ebis savaraudo Tari Ria 2009 wl is

maisi. sse-s dagegmil i aqvs mimaRTos finansTa da energetikis saministroebs
KfW-s kreditis daxurvis vadis 2009 wl is dekembrande gadawevis Sesaxeb.

cxril Si mocemul ia ganawil ebul i da aTvisebul i (gadaxdil i) Tanxebi 2007
wl is 31 dekembris mdgomareobiT:

KfW sakredito resursebidan dafinansebul i RoniZiebebi	Tavdapirvel i ganawil eba EUR	gadanawil ebul ia EUR	aTvisebul ia EUR	naSTi EUR
sakonsul t. momsaxureba	500 000	503 800	243 312	260 488
mTavari kontraqtori	8 500 000	8 705 483	0	8 705 483
gaunawil ebel i	1 000 000	790 717	0	790 717
sul sakredito Tanxebi	10 000 000	10 000 000	243 312	9 756 688
sse-s Tanadafinanseba				
Tavdapirvel i ganawil eba EUR	gadanawil ebul ia EUR	gadaxdil ia EUR	naSTi EUR	
sakonsul t. momsaxureba	0	0	0	0
mTavari kontraqtori	1 240 000	1 400 000	1 040 000	360 000
gaunawil ebel i	160 000	0	0	0
sul Tanadafinanseba	1 400 000	1 400 000	1 040 000	360 000
sul proeqtis Rirebul eba	11 400 000			
cxril i 24				

5.4 el eqtromomargebis seqtorul i programa – KfW krediti #2005 65 531

proeqtis saxel wodeba:	germaniis finansuri TanamSroml oba saqarTvel osTan el eqtromomargebis seqtorul i programa kreditis No.2005 65 531; sesxis mocul oba: 8,313,250.19 evro
mizani:	energoseqtoris mimdinare komercial izaciis da privatizaciis konteqstSi, programa miznad isaxavs daexmaros saqarTvel os el eqtromomargebis sistemas stabil urobis SenarCunebaSi. aseve, proeqti miznad isaxavs sse-s efeqturobis amaRl ebas da saqarTvel os ekonomikuri ganviTarebis xel Sewyobas.
sakredito resursebidan dafinansebul i saproeqto RonisZiebebi:	<ul style="list-style-type: none"> o gardabnis qvesadguris nawil obrivi rehabilitacia im mocul obiT, rac saWiro iqneba el eqtroenergiis Tavisufal i SemodinebisaTvis 500kv gadacemi xazis meSveobiT qvesadgurSi da amasTan dakavSirebiT uzrunvel yofil i sakonsul tacio momsaxureba; o el eqtroenergiis gadacemis sistemis momarageba saWiro da saTadarigo nawil ebiT; o sse-s mimdinare marTvis kontraqtis Tanadafinansebis gagrZel eba
sasesxo da saproeqto xel Sekrul ebis TariRi:	2005 wl is 14 noemberi
sasesxo da saproeqto xel Sekrul ebis gansakuTrebul i SeTanxmebis TariRi:	2005 wl is 14 noemberi
sasesxo da saproeqto xel Sekrul ebis ratifikaciis TariRi:	2005 wl is 28 dekemberi, parl amentis dadgenil eba #2617-rs
qvesasesxo xel Sekrul ebis TariRi:	2006 wl is 3 ivl isi
kreditis daxurvis TariRi:	2008 wl is 31 marti
proeqtis mimdinareoba:	
konsul tanti:	Fichtner GmbH & Co KG
sakons. momsaxurebis Sesaxeb kontraqtis xel moweris TariRi:	2006 wl is 14 seqtemberi
mTavari kontraqtori:	Siemens AG Osterreich
kontraqtis xel mow. TariRi:	2007 wl is 21 noemberi
proeqtis ganxorc. periodi:	14 Tve
dasrul ebis savaraudo TariRi:	2009 wl is marti
miRweul i progresi 2007 wl is 31 dekembri mdgomareobiT:	2007 wl is 21 noembers xel i moewera 7,285,771.01 evros Rirebul ebis sakontraqto SeTanxmebas tenderSi gamarj vebul avstriul kompaniasTan "Siemens AG Osterreich". kontraqtoris mier warmodgenil i invoicebis, avansis gadaxdisa da samuSaos Sestrul ebis sabanko garantiabis safuZvel ze, sse-m dekemberSi gadaixada kontraqtis Rirebul ebis 20%-is (avansis) Tanadafinansebis nawil i. kontraqti Zal aSi Seva kontraqtoris angariSze KfW-s mier dasafinansebel i avansis Tanxis darCenil i nawil is gadaricxvisTanave.
cxril i 25	

"el eqtromomargebis seqtorul i programis ganxorciel ebis mizniT germaniis rekonstruqciis sakredito bankTan (KfW) 2005 wl is 14 noembers gaformebul i sakredito da saproeqto xel Sekrul ebis Tanaxmad, kreditis daxurvis TariRia 2008 wl is 31 marti. vinaidan, sakredito da saproeqto xel Sekrul eba Zal aSi Sevida xel moweridan 8 Tvis Semdeg, 2006 wl is 20

ivl iss (q/s-is "gardabani" aqtivebis sse-saTvis gadacemis Semdeg, rac sakredito resursebidan Tanxebis moxsnis winapirobas warrmoadgenda); mTavar kontraqtortan xel Sekrul ebas xel i moewera 2007 wl is 21 noembers (dagegmil ze 2 TviT gvian) da mxareTa SeTanxmehis Tanaxmad, kontraqtis moqmedebis vadaa 14 Tve, anu dasrul ebis savaraudo TariRia 2009 wl is marti, sse-s dagegmil i aqvs mimarTos finansTa da energetikis saminstroebis KfW-s kreditis daxurvis vadis 2009 wl is dekembramde gadawevis Sesaxeb.

ganawil ebul i da aTvisbul i (gadaxdil i) Tanxebi 2007 wl is 31 dekembris mdgomareobi T:

KfW sakredito resursebidan da finansbul i Roni Ziebi	Tavdapirvel i ganawil eba EUR	gadanawil ebul ia EUR	aTvisbul ia EUR	naSTi EUR
sakonsul t. momsaxureba	300 000	394 258	206 985,46	187 273
menejment-kontraqtori	1 400 000	1 400 000	651 390,92	748 609
mTavari kontraqtori	3 700 000	5 895 771	0	5 895 771
sadispozicio fondi	2 500 000	304 229	0	304 229
ganawil ebul i	400 000	318 992	0	318 992
sul sakredito Tanxebi	8 313 250	8 313 250	858 376,38	7 454 874
sse-s Tanadafinanseba	Tavdapirvel i ganawil eba EUR	gadanawil ebul ia EUR	gadaxdil ia EUR	naSTi EUR
sakonsul t. momsaxureba	0	0	0	
mTavari kontraqtori	1 390 000	1 390 000	1 275 000	115 000
ganawil ebul i	0	0	0	
sul Tanadafinanseba	1 390 000	1 390 000	1 275 000	115 000
sul proeqtis Rirebul eba	9 703 250			
cxril i 26				

6 administraciul i sakiTxebi

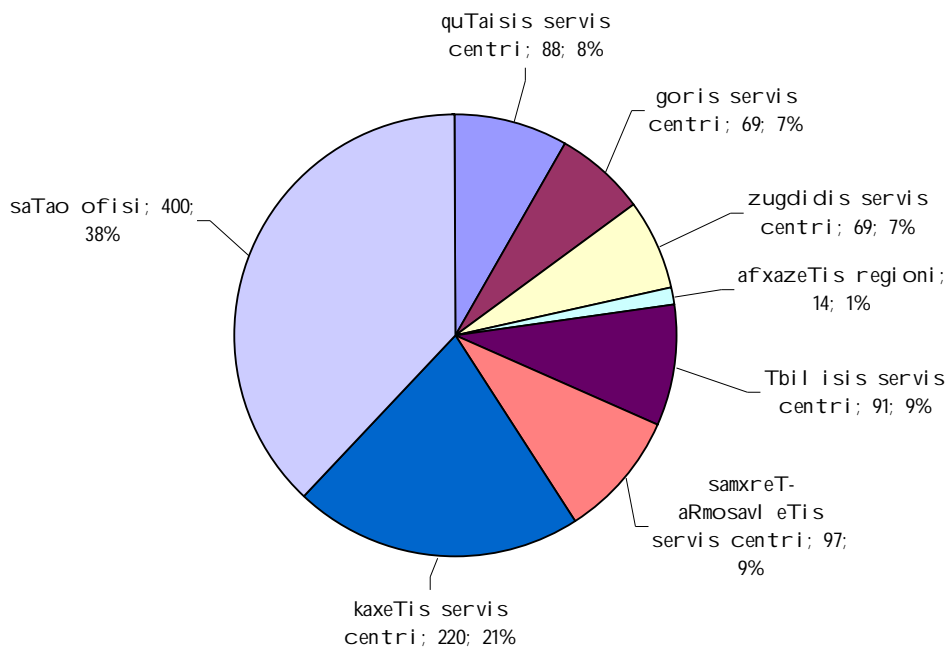
6.1 adamianta resursebi

6.1.1 TanamSromel Ta ricxovnebis monacemebi

	HsaTao ofisi	regionebi	sul
marti 2003	803	3 611	4 429
ianvari 2004	607	3 363	3 970
dekemberi 2004	489	2 265	2 754
dekemberi 2005	408	757	1 165
dekemberi 2006	378	694	1 072
dekemberi 2007	400	648	1 048
cxrili 27			

ამჟამად სსე-სი დასაყმებულ ი პერსონალის რაოდენობა განისაზრვება 1,048 კაციტ; აყდან 648 კაცი დასაყმებულ ია შესამის სერვის ცენტრებსი, ხოლო 400 კაცი სატაო ofისს ემსახურება.

სატაო ofისი/სერვის ცენტრები



**Sps"saqarTvel os saxel mwifo el eqtrosistemis"
muSakTa moZraoba 2007 w. Tveebis mixedviT**

2007 wel i	sawysi raodenoba	SromiTi urTierTobebis moSi a						mi Reba			sabol oo raodenoba
		Sps"el .sistemis" ini ciati viT	muSakis ini ciati viT	gardacval ebi T	muSakis mier val debul ebis darRvevi T	xel Sekrul ebis vadis gasvl iT	sul	dr.kontraqti T	aRdgena	sul mi Reba	
ianvari	1072	1	2	0	0	1	4	27	0	27	1095
Teberval i	1095	3	2	0	1	4	10	9	0	9	1094
marti	1094	0	0	0	3	33	36	4	0	4	1062
april i	1062	0	0	0	1	5	6	6	0	6	1062
maisi	1062	1	2	2	1	0	6	3	0	3	1059
ivnisi	1059	0	4	1	0	1	6	4	0	4	1057
ivlisi	1057	26	1	0	6	4	37	8	0	8	1028
agvisto	1028	6	3	0	1	4	14	13	0	13	1027
seqtemberi	1027	0	3	1	0	2	6	5	0	5	1026
oqtomberi	1026	0	5	1	0	1	7	13	0	13	1032
noemberi	1032	0	0	0	0	1	1	15	0	15	1046
dekemberi	1046	4	2	0	0	2	8	10	0	10	1048
sul 2007 wel i	1072	41	24	5	13	58	141	117	0	117	1048
cxrili 28											

6.1.2 xel fasebi

31 dekembris mdgomareobiT	daricxuli xel fasi (damqiravebl is soc. gadasaxadis gamoklebiT) aTasi l ari
2003 wel i	12,903
2004 wel i	11,109
2005 wel i	9,204
2006 wel i	6,675
2007 wel i	8,068
cxrili 29	

6.1.3 SromiTi urTierTobebi

mimdinareobs xel fasebis regul arul ad gadaxda, rac kompaniis xel mZRvanel obis mimaRT ndobas ufro zrdis. kargi urTierTobebi kvl av SenarCunebul ia profkavSirebis l iderebTan.

wl is ganmavl obaSi gamoyenebul i discipl inarul i RonisZiebebi mocemul ia cxrili is saxiT:

arasaTanado qmedeba	weril obiTi gafrTxil ebebi	ganTavisufleba	sul
cudi discipl inaan samsaxureobrivi moval eobis arakeTil sindisierad Sesrul eba	10	8	18
cxrili 30			

6.1.4 j anmrTel obis dazRvevis sqema

2007 wel s grZel deboda TanamSroml oba sadazRvvo kompania GPIH-Tan sse-is TanamSroml ebisa da maTi oj axis wevrebis (meuRI e da 18 wl amde asakis Svil ebi) nebayofil obiTi j anmrTel obis dazRvevis sferoSi. aRniSnul ma dazRvevam saSual eba misca sse-s TanamSroml ebs avadmyofobis SemTxvevaSi esargebl aT samedicino momsaxurebiT ufasod an SeRavaTebiT.

2007 wl is dekembris Tvis bol osTvis sse-Si dazRveuli iyo 744 TanamSromeli da maTi oj axis wevrebi. vinaidan sse-is TanamSromlebi da profkavSiri kmayofil ebas gamoTqvamen sse-Si j anmrTvel obis dazRvevis sistemis danergvis gamo, dagegmilia dazRvevis gagrZel eba 2008 wel Si.c.U

6.1.5 usafrTxoeba

q/s-Si "marneuli-220"- mimxdari ubeduri SemTxvevis Sedegad daiRupa qvesadguris ufrosi. sxva sawarmoo tramvis SemTxveva 2007 wl is ganmavl obaSi ar dafiqsirebul a.

6.1.6 momzadeba da ganviTareba

momzadeba-ganviTarebis procesi ZiriTadad xorciel deba sse-s profesionali specialistebis (teqnikuri, kompiuteruli da enis swavl ebisTvis) treningis instruqtorebis gamoyenebiT.

sagani	msmenel Ta ra-ba
axal gazrda inJinrebis staJireba	30
inJiner-teqnikuri personal is Treiningi/gadamzadeba	85
PC momzadeba	35
ingl isuri	16
cxrili 31	

6.1.7 korporatiuli sakiTxebi

- "mewarmeTa Sesaxeb" saqarTvel os kanonSi cvl il ebebis Setanis Taobaze sawarmoo marTvis saagentos 31.07.2007w. 1-3/527 brZanebis pirveli punqtis safuZvel ze gauqmda sse-s sameTval yureo sabWo.
- ganxorciel da cvl il ebebi aRmasrul ebel direqtoratSi, roml is Sesabamisad sazogadoebas hyavs generaluri direqtori da oTxi aRmasrul ebel i direqtori: komerciuli aRmasrul ebel i direqtori, finansuri aRmasrul ebel i direqtori, administraciuli aRmasrul ebel i direqtori da teqnikuri aRmasrul ebel i direqtori.
- sse-s direqtorta sabWos 2007 wl is 29 oqtombris sxdomis oqmis safuZvel ze gauqmda sse-is arsebul i struqtura da damtkicda axal i struqtura (ix. danarTi C).
- generalurma direqtorma batonma jozef qorbetma datova sse kontraqtis vadis dasrul ebis gamo; dainiSna axal i generaluri direqtori – batoni sul xan zumburize;

6.2 I o j i s t i k a

sse-s material ur-teqnikuri uzrunvel yofis gaumj obesebisa da mizanmimarTuli da efeqtiani muSaobis mizniT 2007 wl is oqtomberSi Seiqmna I o j i s t i k i s samsaxuri, romel Sic gaerTianda Tbil isis material ur teqnikuri baza, quTaisisa da marneul is sawyobebi, transportis samsaxuri da sameurneo samsaxuri. es ukanasknel i Tavis mxriv moicavs kavSirgabmul obis, arateqnikuri aqtivebisa da sameurneo marTvis ganyofil ebebs.

arsebul i mdgomareobis Seswavl is mizniT Seiqmna saTao ofisSi arsebul i inventarisa da satransporto saSual ebebis inventarizaciis komisiebi.

2007 wel s ganaxl da sse-s avtoparki.

detal urad daigegma da gaiwera is RonisZiebebi, roml ebic aucil ebel ia, gatarde 2008 wel s sse-s funqcionirebis gaumj obesebisa da Sedegianobis gazrdis mizniT.

7 iuridiul i sakiTxebi

2007 wl is ganmavl obaSi ganaxorciel a Semdegi saqmianoba:

- momzadda 40-mde sxvadasxva saxis samarTI ebrivi aqtis da xel Sekrul ebis proeqti, maT Soris:
 - „saqarTvel os saxel mwifo el eqtrosistemis“ direktorTa sabWos regl amenti;
 - brZanebis proeqti S.p.s. „saqarTvel os saxel mwifo el eqtrosistemis“ korespondenciis damuSavebisa da saqmiswarmeobis optimizaciis zogierTi RonisZiebis Sesaxeb;
 - SeTanxmebis proeqti `SCADA-s proeqtiT gansazRvrul i minaerTebis rel euri dacvis, marTvis, avtomatikis da signal izaciis farebidan saWi ro signal ebis gamosatanad samontaJo-gawyobiTi samuSaoebis warmoebis, saWi ro masal ebis ganTavsebis, agreTve qonebis movl isa da eqspl uataciis Sesaxeb-;
 - saqarTvel os kanonis proeqtebi:
 - `saqarTvel os sabaJo kodeqsSi cvl il ebis Setanis Sesaxeb-;
 - `saqarTvel os sagadasaxdo kodeqsSi- cvl il ebisa da damatebis Setanis Sesaxeb;
 - `sabaJo mosakrebl ebis Sesaxeb- saqarTvel os kanonSi damatebis Setanis Taobaze.
 - sse-sa da Tbil isis metros Soris xel Sekrul ebis proeqti saerTaSoriso proeqtis sarealizaci od saWi ro optikur-boWkovani kabel is metros arxebiT gatarebis Sesaxeb;
- samarTI ebrivi anal izi Cautarda 300-ze meti xel Sekrul ebisa da brZanebis proeqts,
- Seswavl il iqna sse-s material ur faseul obaTa srul i inventarizaciis masal ebi da momzadda saTanado daskvna;
- sse-s sadamfuZnebl o da saregistracio dokumentebis mowesrigeba ganxorciel ebul i cvl il ebebis gaTval iswinebiT:
 - cvl il ebebis registracia Semosavl ebis samsaxuris Sesabamisi sagadasaxado inspeqciis samewarmeo reestr is monacemebSi (sawesdebo kapital is Semcireba, direktoratis cvl il ebebi, sawesdebo kapital is gazrda da axal i wesdebis damtkiceba)
 - saqarTvel os finansTa saministros Semosavl ebis samsaxuris msxvil gadamxdel Ta sagadasaxado inspeqciis 2007 wl is 26 seqtembris #266 brZanebiT damtkicda sazogadoebis axal i wesdeba;
 - saqarTvel os finansTa saministros Semosavl ebis samsaxuris msxvil gadamxdel Ta sagadasaxado inspeqciis 2007 wl is 7 dekembris #382-r brZanebiT, saxel mwifo (samewarmeo) reestrSi registrirebul i iqna general uri direktoris Secvl a;
- administraciul i sadavo warmoeba finansTa saministrosTan Semdeg sakiTxebze:

- o sagadasaxado organoebis mier sse-ze damatebiT daricxul sauravebTan dakavSirebiT, ris gauqmda sse-ze 12 ml n. l aramde daricxul i sauravi;
- o qonebis gadasaxadTan dakavSirebiT, ris Sedegadac arasworad gaangariSebul i 40000 l aris gadaxda aiciil a Tavidan sse-m.
- gaaqtiurda muSaoba sasamarTI o procesebis warmatebul ad dasrul ebis mizniT.

32-e cxril Si ixileT informacia sasamarTI os warmoebaSi myofi saqmeebis Sesaxeb, roml ebSi monawil eobda sse:

sasamarTI o davis kategoria (saqme)	sul sasamarTI o davebis raodenoba (saqme)	dasrul da sse-s sasargebl od (saqme)	nawil obriv dakmayofil da sse-s moTxovnebi (saqme)	dasrul da sse-saTvis uaryofiti Sedegit (saqme)	sasamarTI o dava grZel deba 2008 wl isaTvis (saqme)
debitorul i davalianebis mqone organiaziebi simarT mimdinare davebi	8	4	1 (l instanciis sasamarTI oSi)	1 sabol ood damTavrebuli 2 wagebul ia l instanciis sasamarTI oSi	4
sakadro sakiTxebTan dakavSirebul i dava	34 (maT Soris saxel fasoc)	10	2	7	15
samoqal aqo davebis sxva kategoria	39	8		1	30
sul	81	22	3	11	49
cxrili 32					

8 sazogadoebasTan urTierToba

sse-is dadebiti imiji aqvs sazogadoebaSi, risi miRwevac kompaniis muSaobis procesis srul i gamWvirval obitiqna miRweuli.

yovel dRiuri informaciebis gavrcel eba da Jurnal istebTn mWidro kontaqti gaxda sse-is imij is amaRl ebis sawindari.

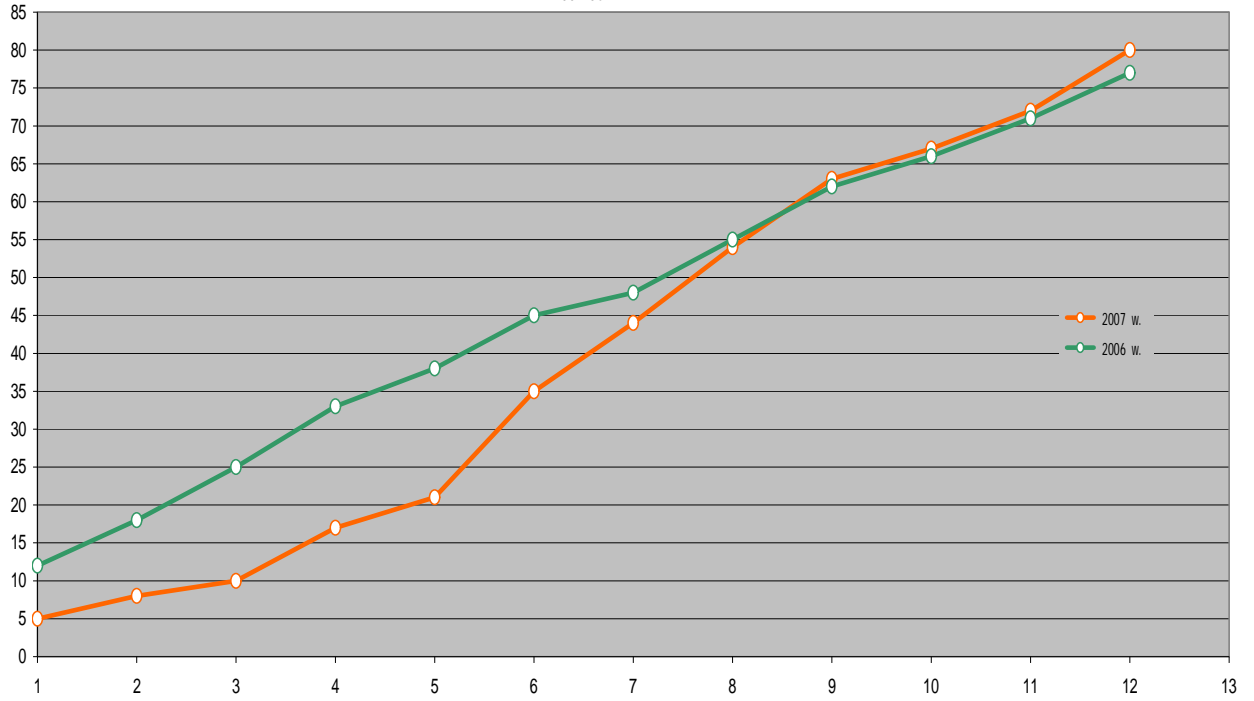
keTdeboda presita da tel eviziiT komentarebi mimdinare movl enebze. gamoica 1 pres-rel izi da 2 korporatiul i gazeTi.

9 danarTi A: 2007 wl is ful adi saxsrebiS Semosaval -gasavl is Semaj amebel i angariSi (Seumowmebel i)

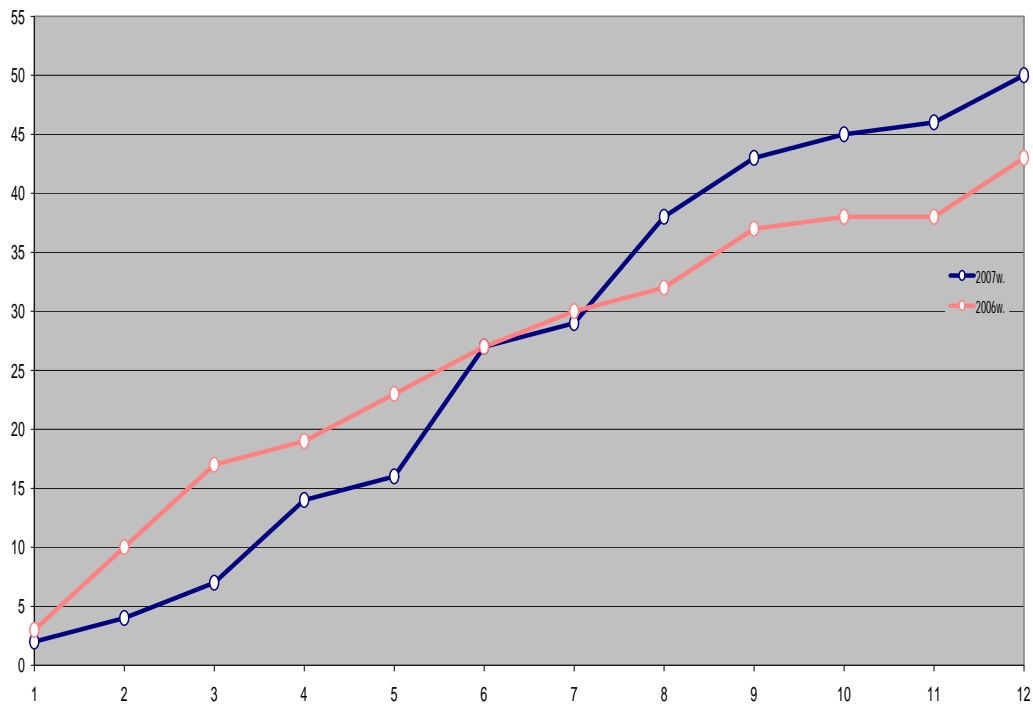
	ian-07	Teb-07	mar-07	apr-07	mai07	ivn-07	ivl -07	agv07	seq-07	aqt-07	noe-07	dek-07	sul 2007
	l ari'000	l ari'000	l ari'000	l ari'000	l ari'000	l ari'000	l ari'000	l ari'000	l ari'000	l ari'000	l ari'000	l ari'000	l ari'000
sawiyisi sakaso naSTi	6 551	8 310	10 237	10 855	13 451	14 313	14 726	15 522	15 810	9 462	9 175	13 330	
Semosaval i:													
pirdapiri kontraqtebi da tranziti	3 639	3 759	3 791	4 187	4 129	2 797	14 404	2 701	2 555	1 978	8 820	2 782	55 544
sxva (kvl eviTis samuSaoebi, ij ara)	16	14	1	38	12	0	159	135	182	14	54	180	806
sul	3 655	3 773	3 792	4 226	4 141	2 797	14 563	2 836	2 737	1 992	8 874	2 962	56 350
danaxarj ebi:													
gadacema/dispetCerizaciis operaciebi & teq-momsax-ba	212	138	34	46	104	94	201	288	73	36	296	430	1 952
xel fasebi (saSemosavl o da soc. gadasax. CaTvl iT)	696	827	902	898	882	880	972	881	886	914	930	943	10 611
administraciul i xarj ebi	105	32	14	129	95	161	33	276	155	147	323	177	1 647
sesxebis procenti	5		609		849				1 848		906	283	4 500
sesxebis dafarva	1				446	209	-142	171	690		511	172	2 058
sse-s wil i martvis kontraqtis gadasaxadebSi		30	60		30		30			50			200
kap. danaxarj ebi	746	801	363	176	61	544	595	848	2 034	1 069	1 520	8 941	17,698
saxel faso da sxva sagadasaxado daval ianeba	47	19	49	349	27	27	11 273	44	2 641	63	12	3	14,554
proeqtebis Tanadafinanseba			10	5		25	45	42			11	6	144
miwisa da qonebis gadasaxadebi	83		158			445					210		896
mogebis gadasaxadi			976	25	784		759		759			759	4 062
sul danaxarj ebi	1 895	1 847	3 175	1 628	3 278	2 385	13 766	2 550	9 086	2 279	4 719	11 714	58 322
Semosavl is gadaWarbeba danaxarj ebze	1 759	1 927	619	2 596	862	413	796	287	-6 348	-287	4 154	-8 751	
sabol oo sakaso naSTi	8 310	10 237	10 855	13 451	14 313	14 726	15 522	15 810	9 462	9 175	13 329	4 579	
reabilit. gegmis biujetiT gaTval isw. danaxarj ebi	3 707	3 283	3 283	4 485	3 516	7 628	3 325	3 057	3 567	3 174	3 181	8 354	50 559
sxvaoba faqtobriv da dagegmil danaxarj ebs Soris	-1 812	-1 436	-108	-2 857	-238	-5 243	10 441	-507	5 519	-895	1 538	3 360	7 763

10 danarTi B: avariul i gamorTvebisa da mowyobil obebis/xazebis dazianebs amsaxvel i diagramebi

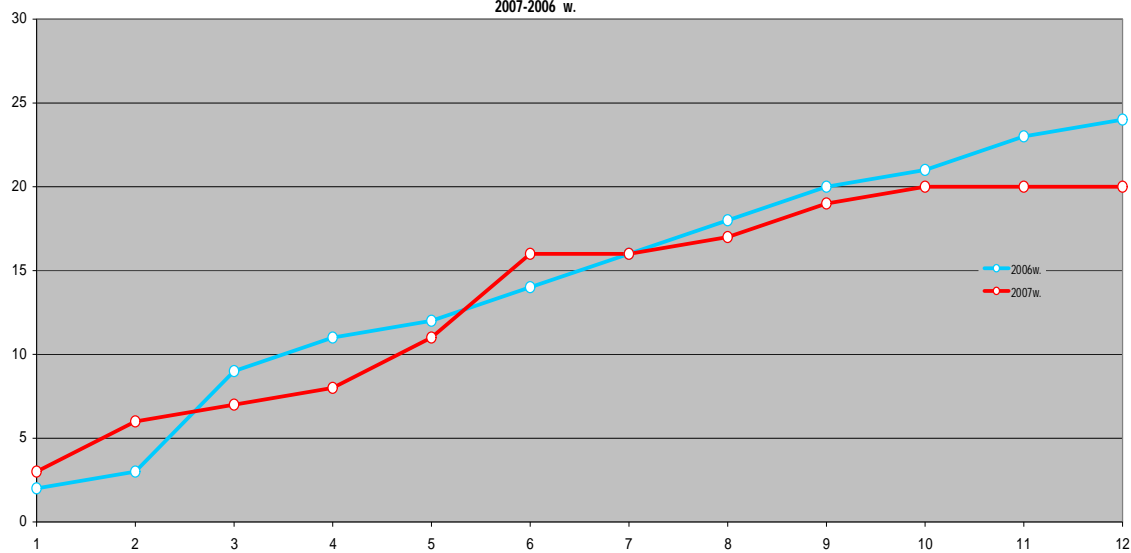
220 kv el eqtrogadacemi xazebis dazianebebi
(nazardi j ami T)
2007-06 w.



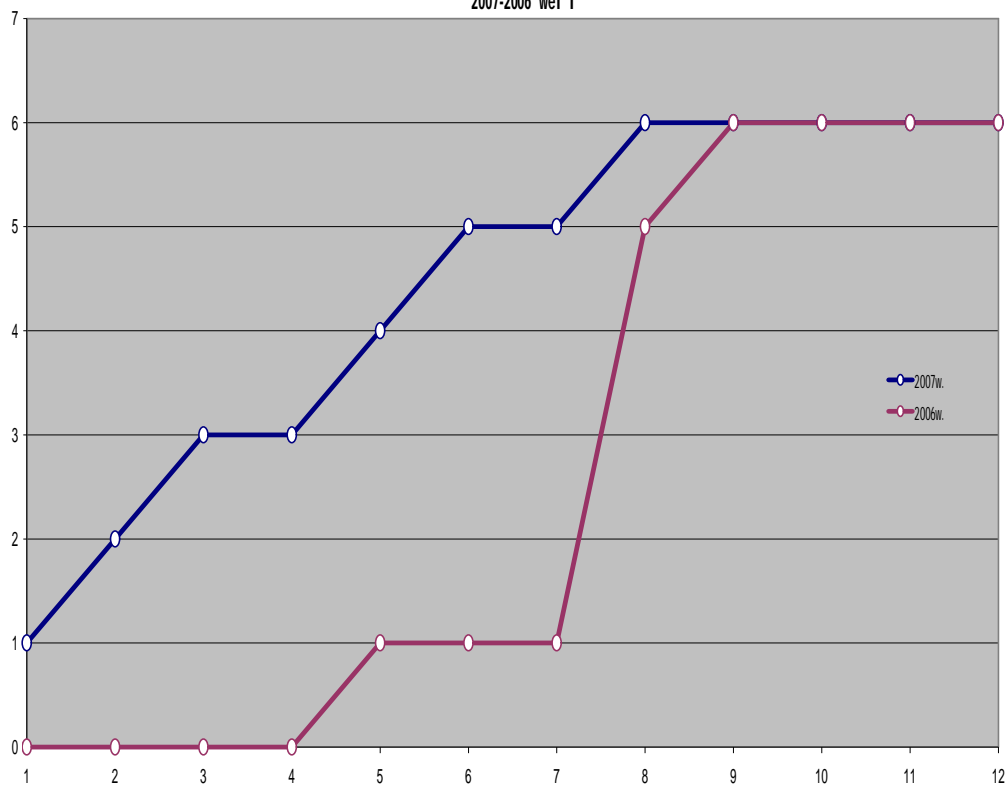
110 kv egx-is avariul i gamorTvebi
2007-2006 w.
(nazardi j ami T)



500-220-110 kv qvesadgurebSi anomsTvel ebis dazi anebebi
(nazardi jami T)
2007-2006 w.



500-220-110 kv qvesadgurebSi Zabvis tr-rebis dazi anebebi
(nazardi jami T)
2007-2006 wl i



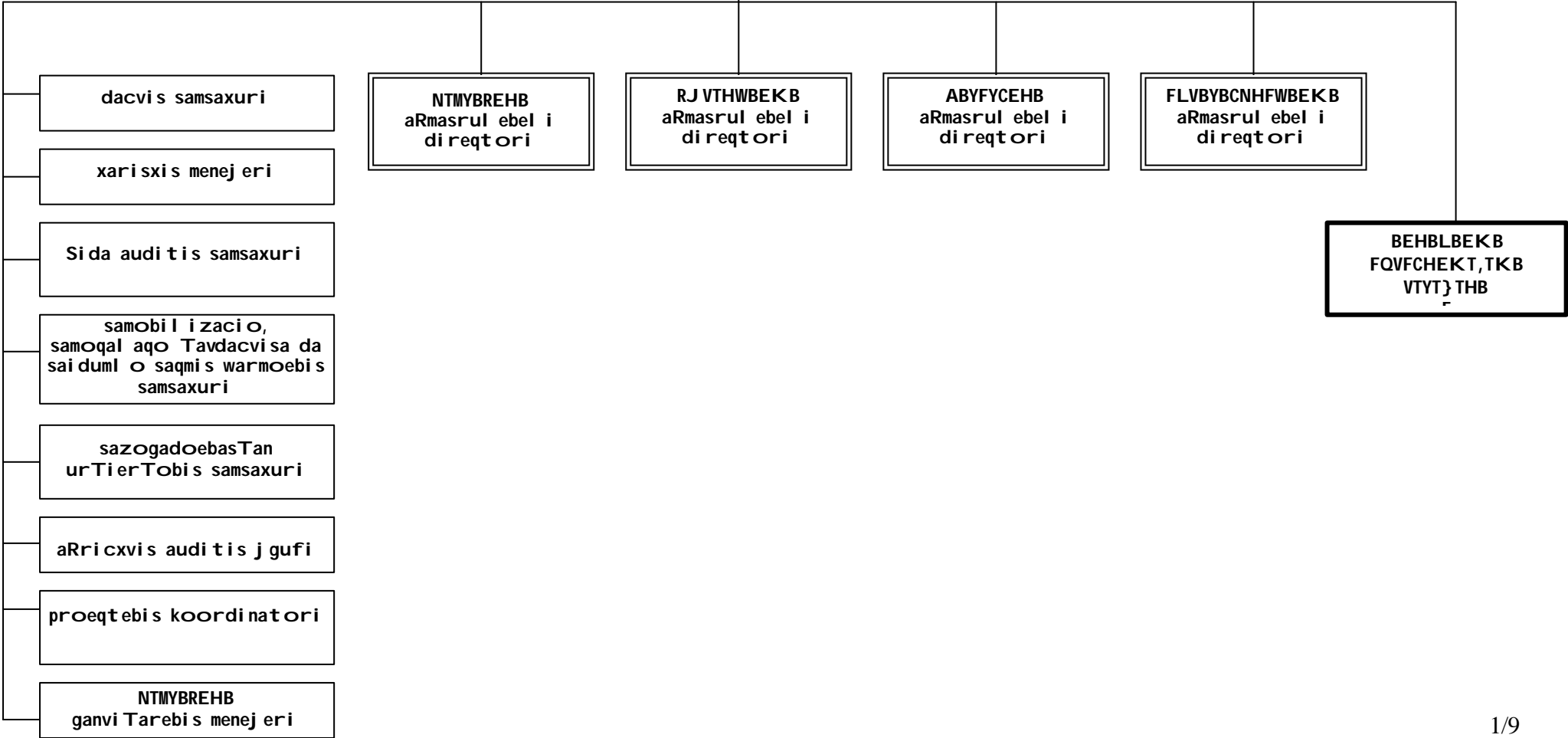
11 danarTi C: sse-s struqtura

general uri direqtori

general uri direqtoris moadgil e

konsul tanti

samdi vno



**administraciuli
aRmasruli direktori**

TanaSemwe

adami anTa resursebi

adami anTa resursebi s
menejeri

organizaciu
li ganvitarebis samsaxuri

kadrebi s samuSaoze
miRebis da registracis
samsaxuri

anazRaurebis
samsaxuri

swavleba-gadamzadebis
samsaxuri

kancelaria

saqmeTa warmoeba

arqivi / fotokopireba

lojistika

lojistikis menejeri

materialur-teqniki
baza

centraluri sawyobi

marneulis sawyobi

qutaisi sawyobi

transportis
samsaxuri

sameurneo samsaxuri

sameurneo martvis
ganyofil eba

aratqniki aqti
vebis ganyofil eba

kavSiringmulobis
ganyofil eba

**sainformacio
teqnologi**

kompiuteruli teqnika
sa da qselis momsaxurebis
jgufi

programuli uzrunvel
yofis jgufi

komerciu l i aRmasrul ebel i direqtori

TanaSemwe

Sesy i dvebi s menej eri

aRri cxvi sa da momxmarebl ebTan urTierTobis menej eri

regul i rebi s samsaxuri

Sesy i dvebi s kontraqtebi s moni tori ngi s samsaxuri

Sesy i dvebi s samsaxuri

momxmarebl ebTan urTierTobis samsaxuri

komerciu l i aRri cxvi s samsaxuri

al fa centri

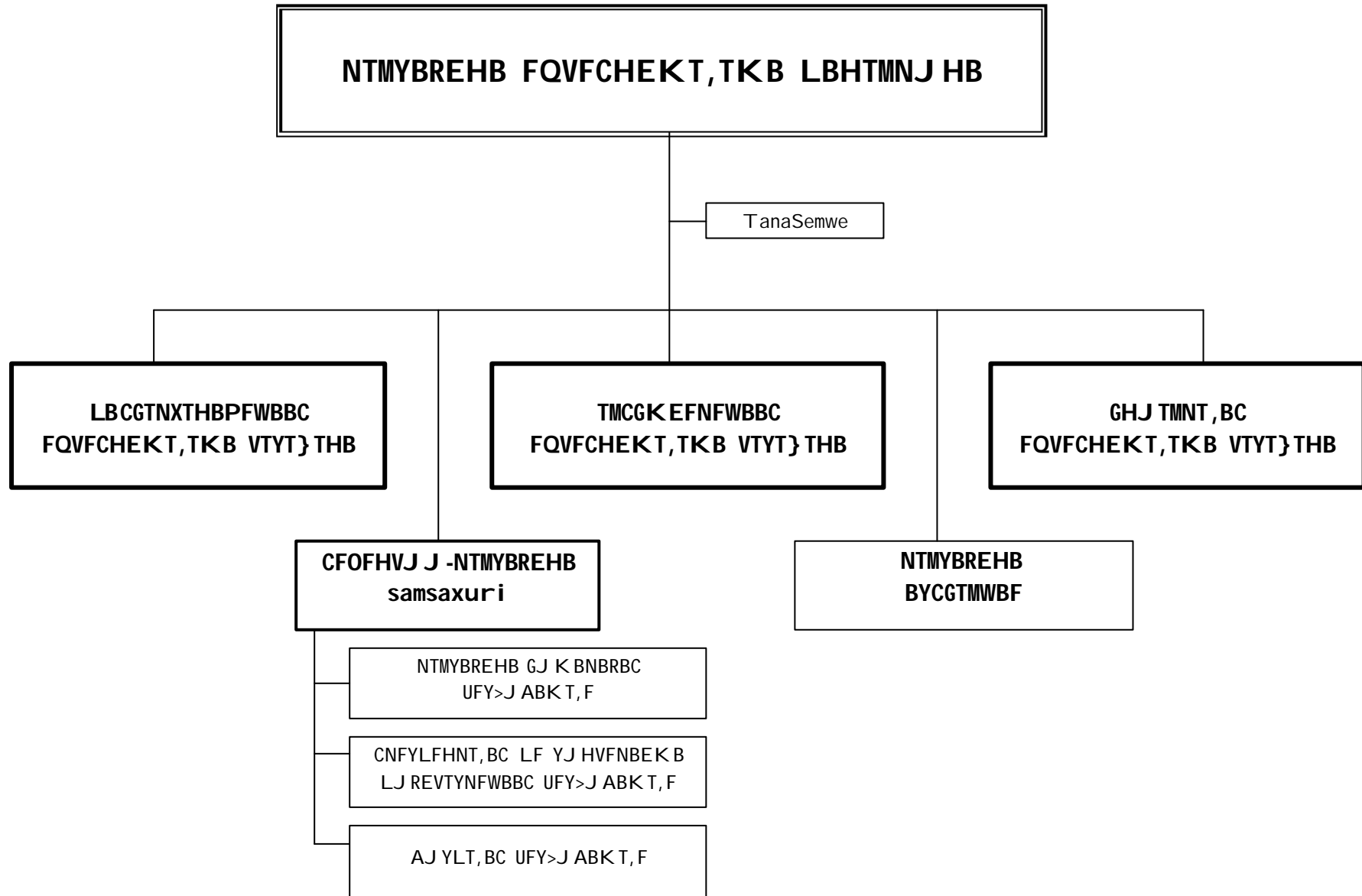
monsaxurebi s dari cxvi s ganyofil eba

sawarmoebTan urTierTobis ganyofil eba

el .energi i s operati ul i aRri cxvi s ganyofil eba

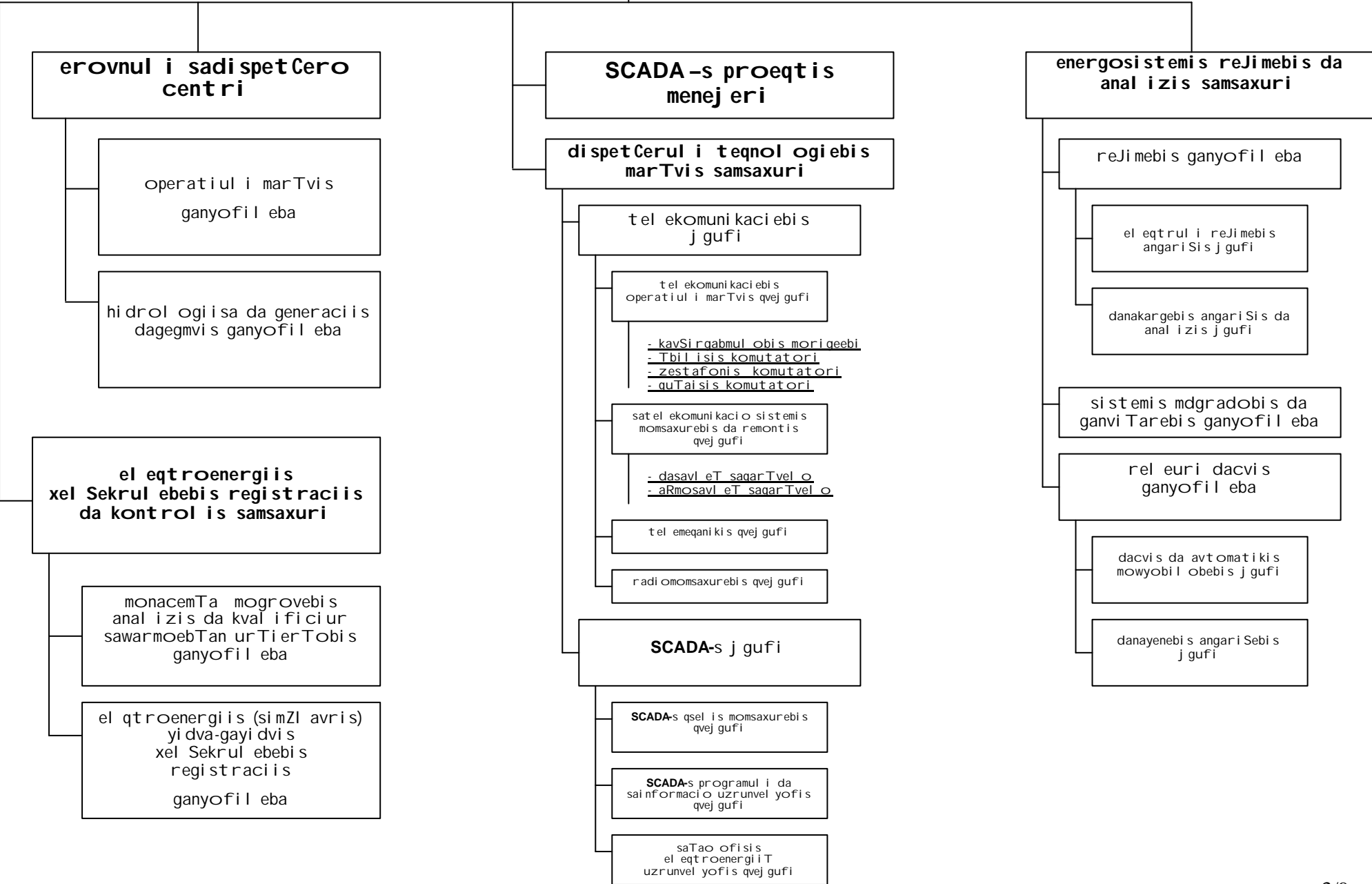
el .energi i s aRri cxvi s kontrol i sa da bal ansebi s ganyofil eba

aRri cxvi s kvanZebi s inspeqt i rebi s ganyofil eba



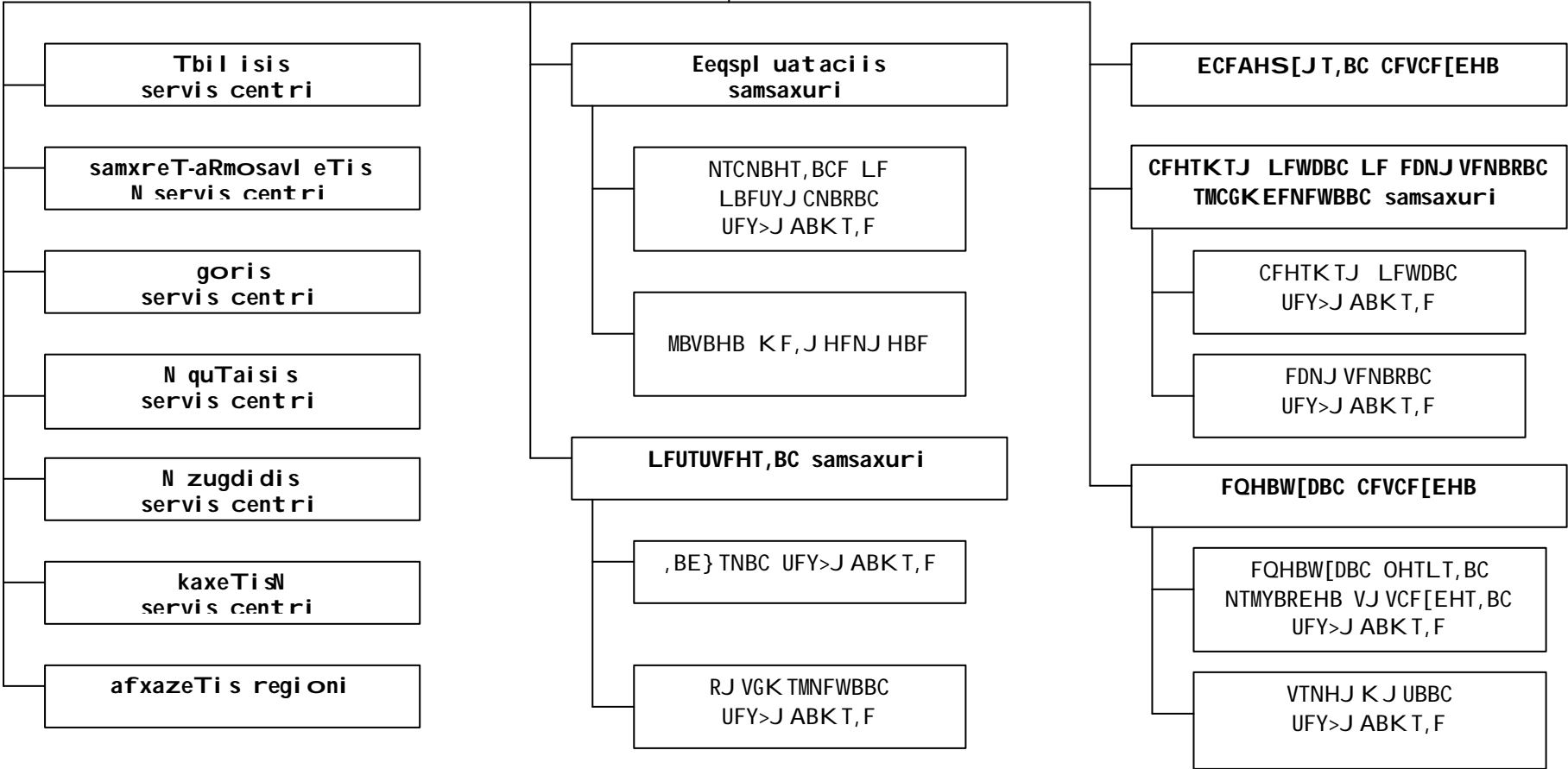
dispetCerizaci is aRmasrul ebel i menej eri

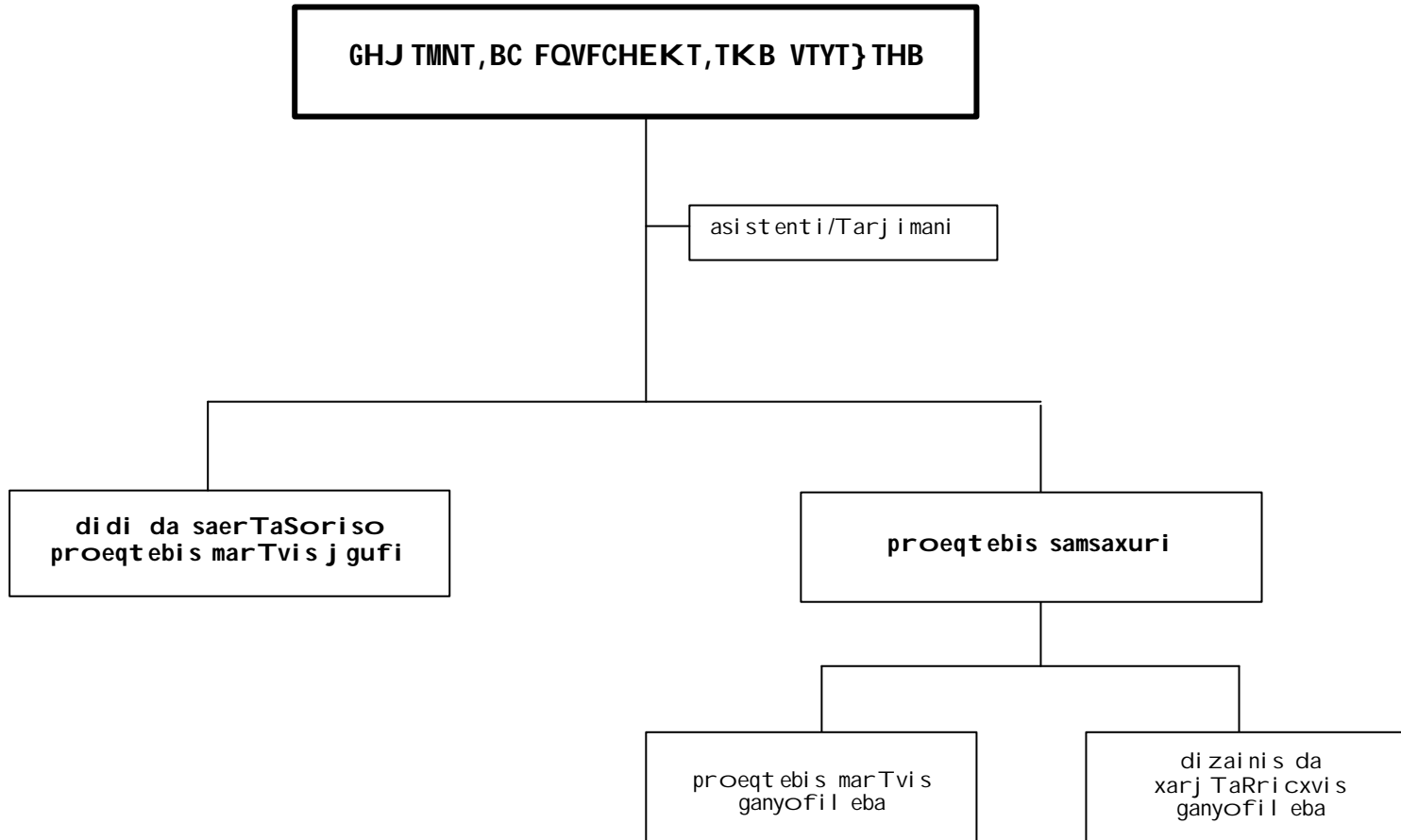
TanaSemwe



T MCGK EFNFWBBC FQVFCHEKT,TKB VTYT}THB

^M
VLBDYF-FCBCNTYNB





finansuri aRmasrul ebel i direqtori

TanaSemwe

CFABYFYCJ CFVCF[EHB
ABYFYCEHB VTYT} THB

,EQFKNTHBF
VSDFHFB ,EQFK NTHB

UFLFCF[FLT,BC LF [TKAFCT,BC
}UEAB

LT,BNJ H-RHTLBNJ HT,BC
}UEAB

iuridul i armasrul ebel i menej eri

asi stenti

iuridul i samsaxuri

iuridul i menej eri

samarTl ebrivi
konsul taci is ganyofil eba

kontraqtebis da
eqspertizis ganyofil eba

LT, BNJ, HT, SFY VELEJ, BC } UEAB